

# PRODUCT CATALOG

## GATE OPERATORS

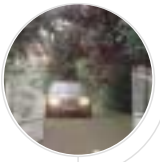


## CONTROLS

## GATE OPERATOR ACCESSORIES

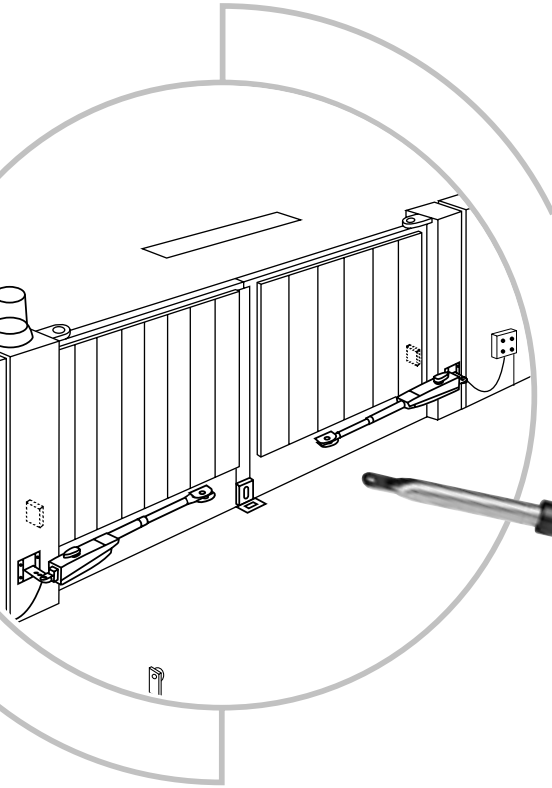
01.07.2002

CHAMBERLAIN™  
**LiftMaster™**  
PROFESSIONAL



# LYN Series

## Wing Gate Operator



**Manual Release with Key Lock**



**Linear Actuator**



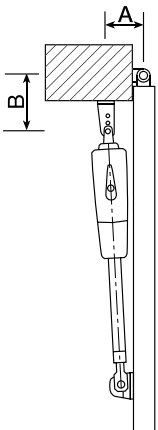
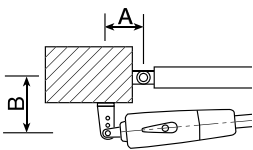
**Post Brackets – Universal Usage**



**Professional Post-Connection**



**Heavy-Duty Door Bracket**



**LYN300**

		A						
		10	12	14	16	18	20	22
B	10		115°					
	12		110°	121°	110°	105°	100°	
	14		108°	105°	101°	100°	94°	
	16		106°	95°	93°	100°	92°	
	18			93°	87°	87°		
	20							
22								

A=15cm  
B=15cm =ca. 90°

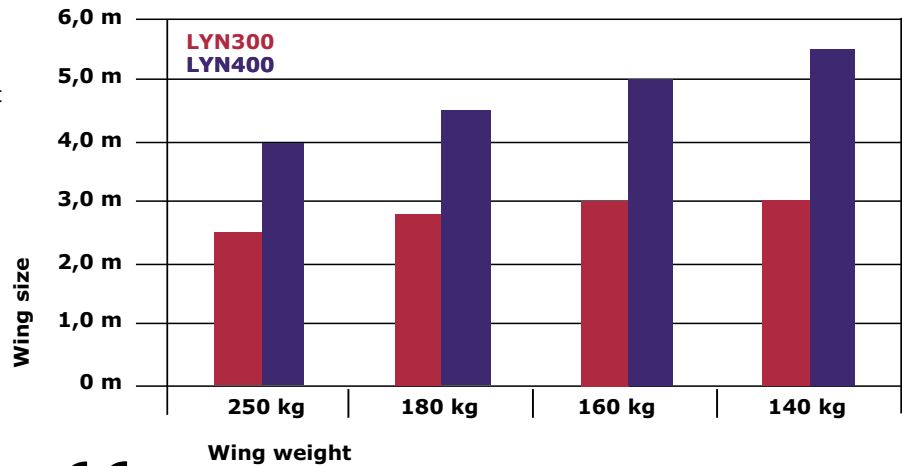
**LYN400**

		A						
		14	16	18	20	22	24	26
B	14	105°	120°	125°	111°	105°	99°	95°
	16	103°	118°	113°	102°	98°	94°	90°
	18	111°	115°	105°	97°	93°	90°	
	20	109°	103°	96°	90°	87°/118°		
	22	106°	95°	90°				
	24	93°						
26								

A=19cm  
B=19cm =ca. 90°

## engineered with the professional mind

- Symmetrical Design**  
 Fits both right and left hand installations, making it convenient to install and the best operator to have in stock at all times.
- Long-lasting durability**  
 Each model features a powder-coated, die-cast aluminum housing to resist rust and corrosion.
- Everything you need is included**  
 Complete installation instructions and all required hardware are provided
- Added security**  
 Each model features a manual key lock release that will only operate with a removable key for added assurance during power outages.
- Heavy duty**  
 Rugged steel screw and gearing provide years of reliable, quiet performance.



Install all equipment in compliance with EN60335-2-103



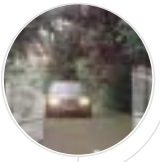
two-year warranty

## Specification Chart

		LYN300	LYN300KS Kit	LYN300K Kit	LYN300K-120 Kit	LYN400	LYN400KS Kit	LYN400K Kit	LYN400K-120 Kit
<b>Number of Operators</b>		1	1	2	2	1	1	2	2
<b>Voltage In</b>	V AC	230	230	230	127	230	230	230	127
<b>Frequency</b>	Hz	50	50	50	60	50	50	50	60
<b>Power</b>	W	280	280	280	280	280	280	280	280
<b>Current</b>	A	1.2	1.2	1.2	2.4	1.2	1.2	1.2	2.4
<b>Rated Thrust</b>	N	250	250	250	250	250	250	250	250
<b>Capacitor</b>	microF	6.3	6.3	6.3	25	6.3	6.3	6.3	25
<b>Thermal Overload Protection</b>	deg C	140°	140°	140°	140°	140°	140°	140°	140°
<b>Motor Speed</b>	RPM	1400	1400	1400	1650	1400	1400	1400	1650
<b>Travel Speed (arm)</b>	mm/s	20	20	20	20	12	12	12	12
<b>Travel</b>	mm	300	300	300	300	400	400	400	400
<b>Duty Cycle (max)</b>	cycles/hr	20	20	20	20	10	10	10	10
<b>Working Temperature Range</b>	deg C	-20°C to 55°C	-20°C to 55°C	-20°C to 55°C	-20°C to 55°C	-20°C to 55°C	-20°C to 55°C	-20°C to 55°C	-20°C to 55°C
<b>Protection Class</b>		I	I	I	I	I	I	I	I
<b>Degree of Protection</b>	IP	44	44	44	44	44	44	44	44
<b>Weight (arm)</b>	kg	6.85	6.85	6.85	6.85	7.15	7.15	7.15	7.15
<b>Electronic Controls</b>		no	yes	yes	yes	no	yes	yes	yes
<b>Remote Controls</b>		no	2 x 3ch mini	2 x 3ch mini	2 x 3ch mini	no	2 x 3ch mini	2 x 3ch mini	2 x 3ch mini
<b>Frequency</b>	MHz	N/A	433.92	433.92	390	N/A	433.92	433.92	390
<b>IR Sensor</b>		no	yes	yes	yes	no	yes	yes	yes
<b>Flashing Light</b>		no	yes	yes	yes	no	yes	yes	yes
<b>Key Switch</b>		no	yes	yes	yes	no	yes	yes	yes
<b>Antenna Kit</b>		no	yes	yes	yes	no	yes	yes	yes
<b>Max Gate Wing Length</b>	m	2.5	2.5	2.5	2.5	4	4	4	4
<b>Max Gate Weight at max. wing length</b>	kg	250	250	250	250	250	250	250	250

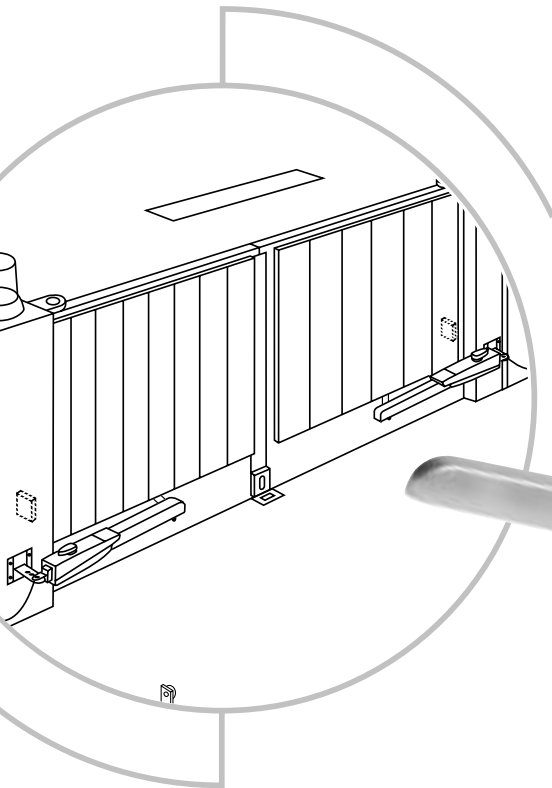
### OPTIONAL ACCESSORIES:

- **600091** Main Switch
- **600008** IR Stand
- **600084** Emergency Stop
- **600046** Safety Edge
- **600015** Key Switch Stand
- **100263** Extra Infrared Sensors
- **4330E/4332E/4333E/4335E** Remote Controls
- **747E** Wireless Keyless Entry

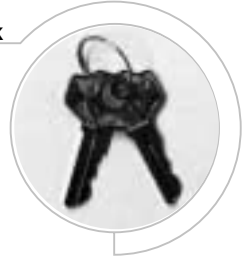


# SCS Series

## Wing Gate Operator



**Manual Release with Key Lock**



**Covered Screw Actuator**

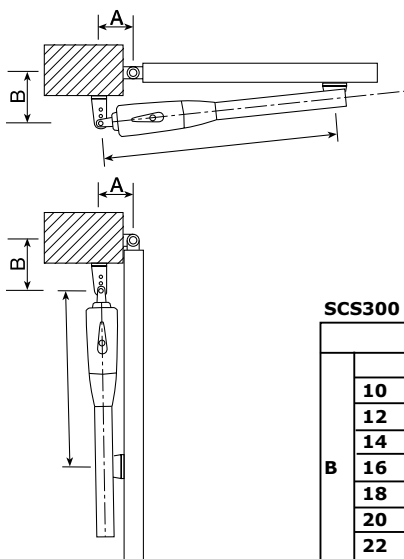
**Professional Post-Connection**



**Post Brackets – Universal Usage**



**8mm Steel Heavy-Duty Door Bracket**



**SCS300**

		A						
		10	12	14	16	18	20	22
B	10		115°		110°	105°	100°	
	12		110°	121°	101°	100°	94°	
	14		108°	105°	93°	100°	92°	
	16		106°	95°	87°			
	18			93°				
	20						A=15cm	=ca. 90°
	22						B=15cm	

engineered with the professional mind...

...for customers that demand the best

• **Symmetrical Design**

Fits both right and left hand installations, making it convenient to install and the best operator to have in stock at all times.

• **Long-lasting durability**

Each model features a powder-coated, die-cast aluminum housing to resist rust and corrosion.

• **Everything you need is included**

Complete installation instructions and all required hardware are provided

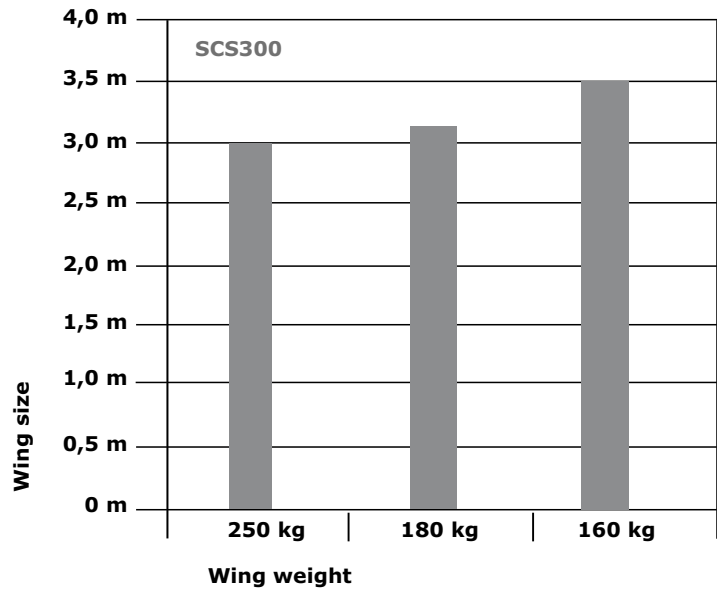
• **Added security**

Each model features a manual key lock release that will only operate with a removable key for added assurance during power outages.

• **Heavy duty**

Rugged steel screw and gearing provide years of reliable, quiet performance.

**two-year warranty**



**Specification Chart**

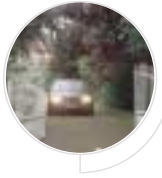
		SCS300	SCS300KS Kit	SCS300K Kit	SCS300K-120 Kit
<b>Number of Operators</b>		1	1	2	2
<b>Voltage In</b>	V AC	230	230	230	127
<b>Frequency</b>	Hz	50	50	50	60
<b>Power</b>	W	280	280	280	280
<b>Current</b>	A	1.2	1.2	1.2	2.4
<b>Rated Thrust</b>	N	250	250	250	250
<b>Capacitor</b>	microF	6.3	6.3	6.3	25
<b>Thermal Overload Protection</b>	deg C	140°	140°	140°	140°
<b>Motor Speed</b>	RPM	1400	1400	1400	1650
<b>Travel Speed (arm)</b>	mm/s	20	20	20	20
<b>Travel</b>	mm	340	340	340	340
<b>Duty Cycle (max)</b>	cycles/hr	20	20	20	20
<b>Working Temperature Range</b>	deg C	-20°C to 55°C	-20°C to 55°C	-20°C to 55°C	-20°C to 55°C
<b>Protection Class</b>		I	I	I	I
<b>Degree of Protection</b>	IP	44	44	44	44
<b>Weight (arm)</b>	kg	6.6	6.6	6.6	6.6
<b>Electronic Controls</b>		no	yes	yes	yes
<b>Remote Controls</b>		no	2 x 3ch mini	2 x 3ch mini	2 x 3ch mini
<b>Frequency</b>	MHz	N/A	433.92	433.92	390
<b>IR Sensor</b>		no	yes	yes	yes
<b>Flashing Light</b>		no	yes	yes	yes
<b>Key Switch</b>		no	yes	yes	yes
<b>Antenna Kit</b>		no	yes	yes	yes
<b>Max Gate Wing Length</b>	m	3	3	3	3
<b>Max Gate Weight at max Wing Length</b>	kg	250	250	250	250



Install all equipment in compliance with EN60335-2-103

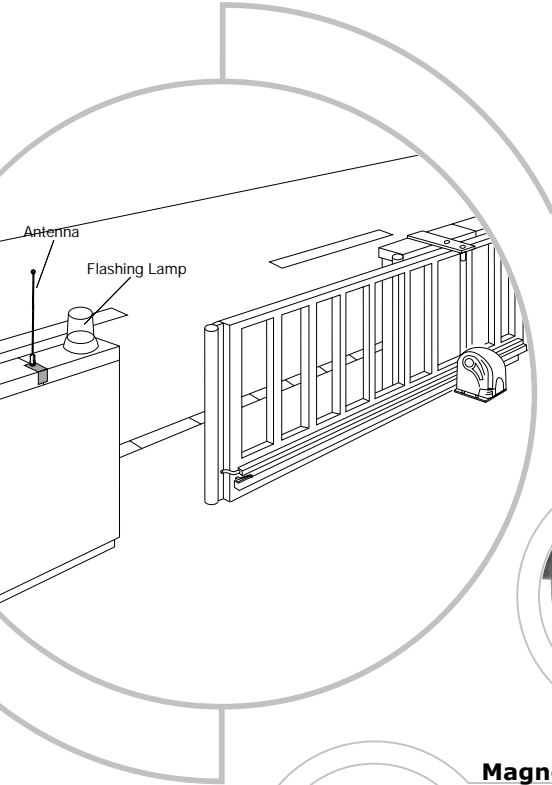
**OPTIONAL ACCESSORIES:**

- **600091** Main Switch
- **600008** IR Stand
- **600084** Emergency Stop
- **600046** Safety Edge
- **600015** Key Switch Stand
- **100263** Extra Infrared Sensors
- **4330E/4332E/4333E/4335E** Remote Controls
- **747E** Wireless Keyless Entry



# SLY Series

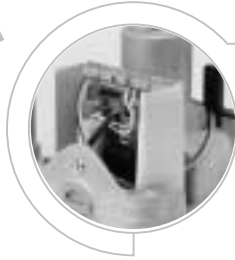
## Sliding Gate Operator



**Efficiency and Style**



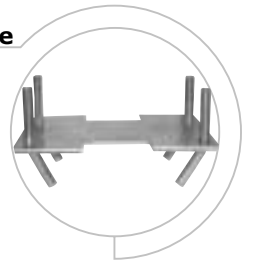
**Control Board inside Mount  
Release Lock with Key**



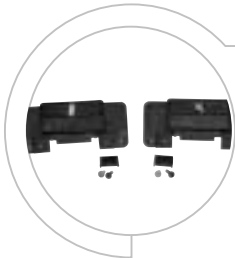
**Height Adjustable Mounting Plate**



**Heavy-Duty Mounting Plate**



**Magnetic Limit Switches**



## Racks



**320001 Heavy-Duty Steel Rack - 1m**  
**202097 Heavy-Duty Steel Rack - 4 x 1m Kit**

- 10mm thick steel
- Two distance holder for welding included
- Module 4
- For gates up to 3000kg



**202103 Steel Rack • 1m**  
**202110 Steel Rack • 4 x 1m Kit**

- Folded steel - 50cm/piece
- Distance brackets and hardware included
- Module 4
- For gates up to 500kg



**202127 Plastic Rack - 1m**  
**202134 Plastic Rack - 4 x 1m Kit**

- Heavy-duty plastic - 50cm/piece
- Distance brackets and screws included.
- Very quiet operation
- Module 4
- For gates up to 500kg



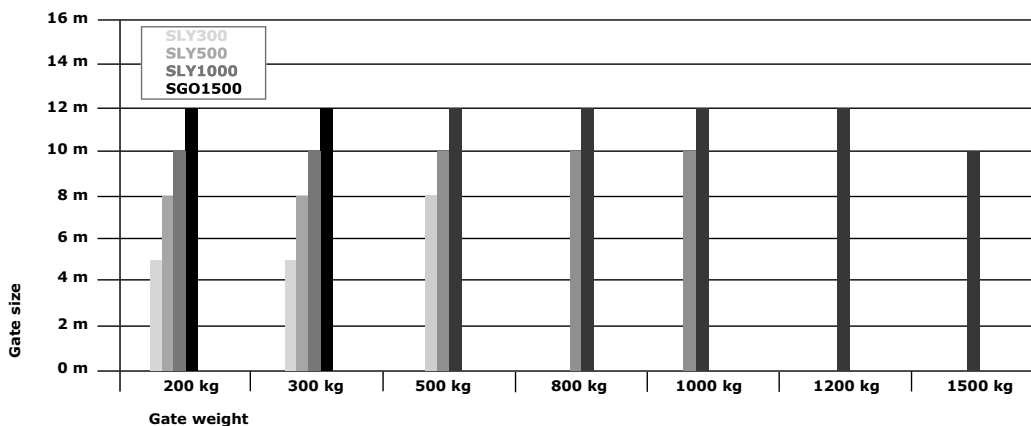
## strength and durability

Strong and compact mechanical Sliding Gate Openers with pinion drive make it suitable for residential or industrial use.

### Features

- Mechanical Limit Switch
- Lateral Base Plate
- Additional Manual Release
- Weather proof Housing
- Deep-set Pinions
- Compact Housing
- Maintenance Free
- Permanent Lubrication

### two-year warranty



## Motor Specification Chart

		SLY300	SLY500 Kit	SLY500-120	SLY1000	SGO1500
<b>Voltage In</b>	V AC	230	230	120	230	230
<b>Frequency</b>	Hz	50	50	60	50	50
<b>Power</b>	W	300	360	360	480	600
<b>Current (max.)</b>	A	1.3	1.5	3.0	2.1	3.7
<b>Torque</b>	Nm	9	10	10	12	1700
<b>Capacitor</b>	microF	8	10	40	16	16
<b>Thermal Overload Protection</b>	deg C	140°	140°	140°	140°	140°
<b>Motor Speed</b>	RPM	1400	1400	1625	1400	1400
<b>Travel Speed</b>	m/min	12	12	14	11.5	9
<b>Duty Cycle (max)</b>	cycles/hr	30	30	30	30	20
<b>Working Temperature Range</b>	deg C	-20°C to 55°C	-20°C to 55°C	-20°C to 55°C	-20°C to 55°C	-20 C to 55 C
<b>Protection Class</b>		I	I	I	I	I
<b>Degree of Protection</b>	IP	44	44	44	44	44
<b>Weight</b>	kg	9	9	9	10	13
<b>Max Gate Wing Length</b>	m	5	8	8	10	12
<b>Max Gate Weight at max Length (including 20% Reserve)</b>	kg	300	500	500	1000	1000

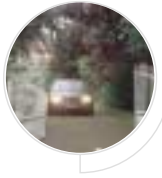
### 203261 RPM Sensor

- Provides Force Reversal
- Additional Safety
- Easy to install



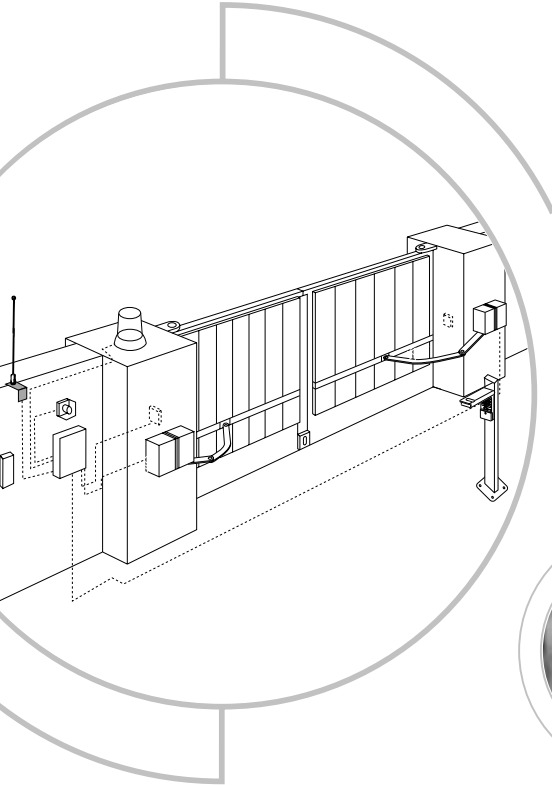
## Model & Carton Content Chart

Model Number	Drive Unit w/ Cover	Height adj. Mounting Plate	Capacitor	Magnetic Limit Switches	Electronic Controls CB2	Remote Controls	Receiver & Radio	IR Sensor	Flashing Light	Key Switch	Antenna Kit	4m Steel Rack	4m Heavy-duty Steel Rack	4m Plastic Rack	Number of Cartons
SLY300	•	•	•	•											1
SLY300E	•	•	•	•	•										1
SLY300K	•	•	•	•	•	2 x	433	•	•	•	•				1
SLY300K1	•	•	•	•	•	2 x	433	•	•	•	•	•			2
SLY300K2	•	•	•	•	•	2 x	433	•	•	•	•		•		2
SLY300K3	•	•	•	•	•	2 x	433	•	•	•	•			•	2
SLY500	•	•	•	•	•										1
SLY500E	•	•	•	•	•										1
SLY500K	•	•	•	•	•	2 x	433	•	•	•	•				1
SLY500K1	•	•	•	•	•	2 x	433	•	•	•	•	•			2
SLY500K2	•	•	•	•	•	2 x	433	•	•	•	•		•		2
SLY500K3	•	•	•	•	•	2 x	433	•	•	•	•			•	2
SLY1000	•	•	•	•	•										1
SLY1000E	•	•	•	•	•										1
SLY1000K	•	•	•	•	•	2 x	433	•	•	•	•				1
SLY1000K2	•	•	•	•	•	2 x	433	•	•	•	•			•	2
SGO1500	•	•	•	<i>mechanical</i>											1
<i>120 Volt</i> SLY500E-120	•	•	•	•											1
SLY500K-120	•	•	•	•	•	2 x	390	•	•	•	•				1
SLY500K1-120	•	•	•	•	•	2 x	390	•	•	•	•	•			2
SLY500K2-120	•	•	•	•	•	2 x	390	•	•	•	•		•		2
SLY500K3-120	•	•	•	•	•	2 x	390	•	•	•	•			•	2



# AGO250

## Articulated Arm Gate Operator



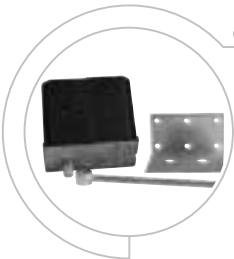
**Manual Release with Key**



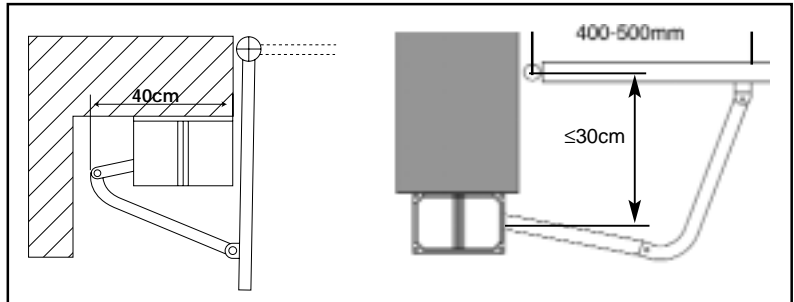
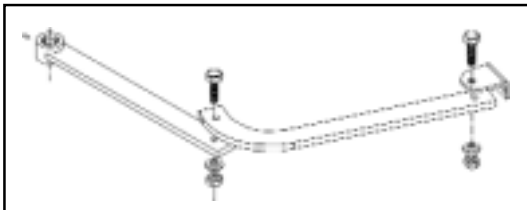
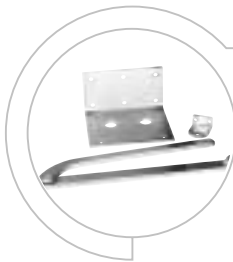
**Built-in Limit Switches**



**Compact Dimensions**



**Heavy-Duty Mounting Hardware**





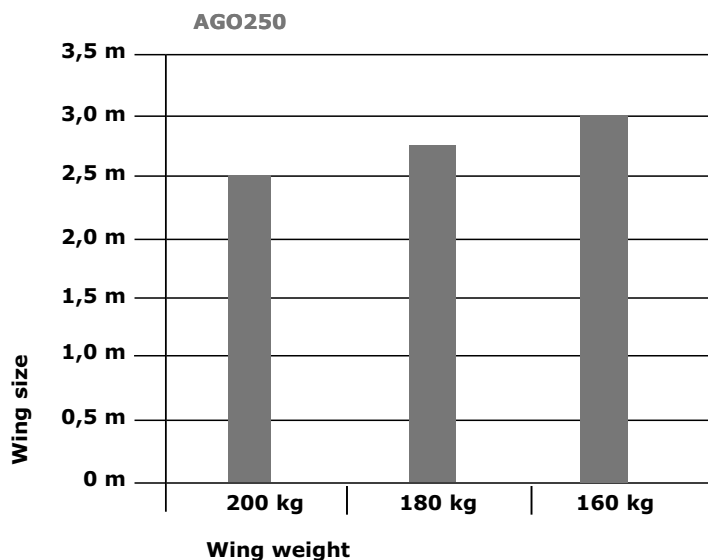
## the wing gate opener for wide pillars

The special arm is ideal for wide pillars. An automatic stop and built-in limit switch are special features for this operator.

### Features:

- Automatic stop
- Built-in limit switch Open/Close
- Manual release in case of power outage
- Mounting brackets for wide pillars included
- Maintenance free
- Rotation distances possible up to 30cm
- Robust construction

### two-year warranty



## Specification Chart

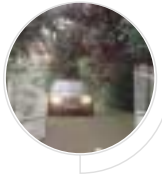
		AGO250L Left	AGO250R Right	AGO250K Kit
Number of Operators		1	1	2
Voltage In	V AC	230	230	230
Frequency	Hz	50	50	50
Power	W	280	280	300
Current	A	1.2	1.2	1.7
Thrust max.	Nm	300	300	300
Capacitor	microF	10	10	10
Thermal Overload Protection	deg C	135°	135°	135°
Motor Speed	RPM	1400	1400	1400
Duty Cycle (max)	cycles/hr	20	20	20
Working Temperature Range	deg C	-20°C to 60°C	-20°C to 60°C	-20°C to 60°C
Protection Class		I	I	I
Degree of Protection	IP	44	44	44
Weight (actuator)	kg	12	12	12
Electronic Controls		no	no	yes
Remote Controls		no	no	2 x 3ch mini
Frequency	MHz	N/A	N/A	433.92MHz
IR Sensor		no	no	yes
Flashing Light		no	no	yes
Key Switch		no	no	yes
Antenna Kit		no	no	yes
Max Gate Wing Length	m	2.5	2.5	2.5 each
Max Gate Wing Weight at max. Wing Length	kg	200	200	200 each



Install all equipment in compliance with EN60335-2-103

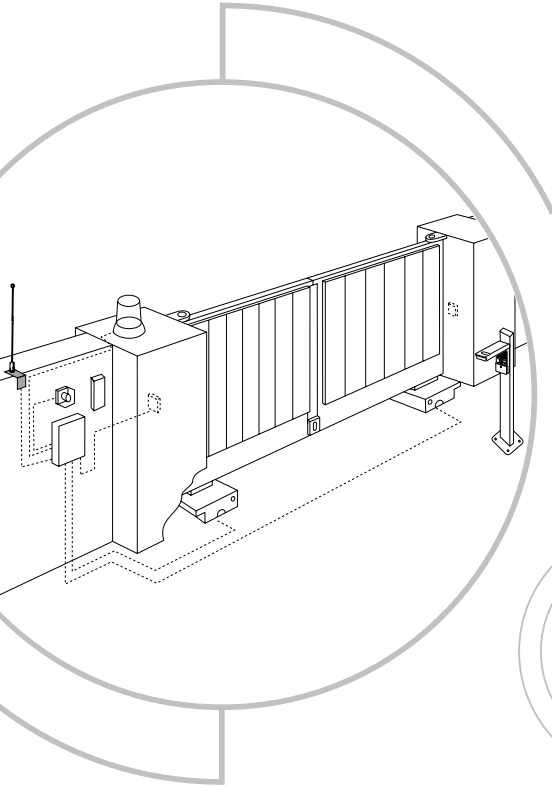
### OPTIONAL ACCESSORIES:

- **600091** Main Switch
- **600008** IR Stand
- **600084** Emergency Stop
- **600046** Safety Edge
- **600015** Key Switch Stand
- **100263** Extra Infrared Sensors
- **4330E/4332E/4333E/4335E** Remote Controls
- **747E** Wireless Keyless Entry



# UGO300

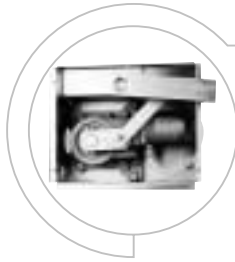
## Underground Gate Operator



**Manual Release with Key**



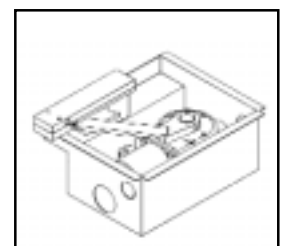
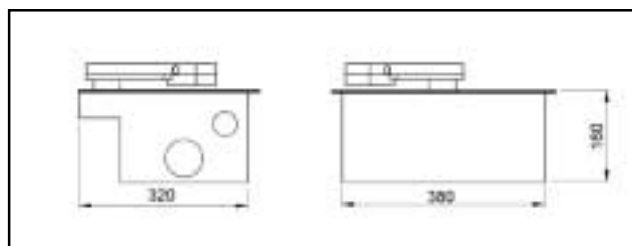
**Mechanical Operating System**



**Gate Support with Ball-Bearing**



**Heavy-Duty Box Rust Resistant**

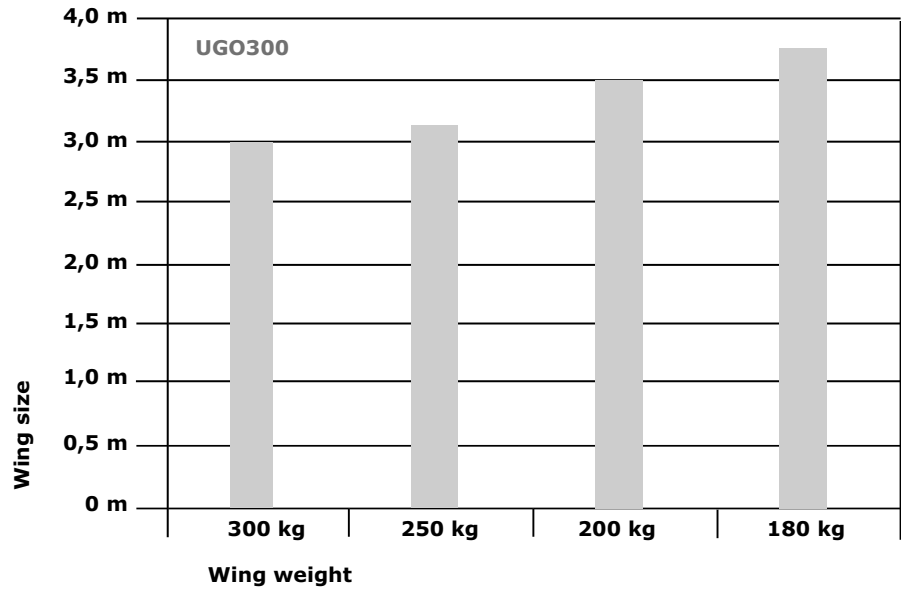


**the luxury class:  
the underground motor - for  
the sophisticated look**  
Under the gate, set in secrecy, for  
those who put high demands on an  
opener.

**Features:**

- Maintenance free
- Serviceability without removing the wing
- Permanent Lubrication
- Mechanical System
- Water-proof motor
- Stable electronic box with control plate
- Additional gate support with ball bearings
- High performance for heavy gates
- Manual release in the gate arm connector

**two-year warranty**



**Ordering Assistance for Kits**

- ◆ UGO300B Box
- ◆ UGO300M Motor
- ◆ Electronic Control GOC1A (recommended)
  - Radio Module & Adapter 801719
  - Remote Control 433MHz (refer to "Accessories")
  - Antenna ANT4X-1LM
  - Safety Module (801696) for Operation with Infrared Sensor
- ◆ Flashing Light FLA230-2
- ◆ Infrared Sensor 100263
- ◆ Key Switch 100027

**Specification Chart**

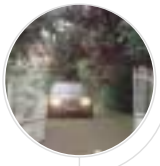
		UGO300M
<b>Voltage In</b>	V AC	230
<b>Frequency</b>	Hz	50
<b>Power</b>	W	190
<b>Current</b>	A	1.3
<b>Rated Thrust</b>	N	380
<b>Capacitor</b>	microF	10
<b>Thermal Overload Protection</b>	deg C	135°
<b>Motor Speed</b>	RPM	1400
<b>Duty Cycle (max)</b>	cycles/hr	20
<b>Working Temperature Range</b>	deg C	-35°C to 80°C
<b>Protection Class</b>		I
<b>Degree of Protection</b>	IP	57
<b>Weight (motor)</b>	kg	10
<b>Electronic Controls</b>		no
<b>Remote Controls</b>		no
<b>Frequency</b>	MHz	N/A
<b>IR Sensor</b>		no
<b>Flashing Light</b>		no
<b>Key Switch</b>		no
<b>Antenna Kit</b>		no
<b>Max Gate Wing Length</b>	m	3
<b>Max Gate Wing Weight at max. Wing Length</b>	kg	300kg



Install all equipment in compliance with  
EN60335-2-103

**OPTIONAL ACCESSORIES:**

- **600091** Main Switch
- **600008** IR Stand
- **600084** Emergency Stop
- **600046** Safety Edge
- **600015** Key Switch Stand
- **100263** Extra Infrared Sensors
- **4330E/4332E/4333E/4335E** Remote Controls
- **747E** Wireless Keyless Entry

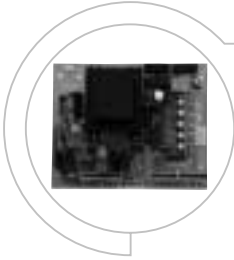


# Controls & Receivers - Wing Gates

## CB1 Wing Gate Electronic Control for 230Volt

- Power/Force adjustment for each wing
- Adjustable wing delay
- Pedestrian opening function
- Adjustable automatic close
- 5-Pin Receiver connection (801719)
- Auto-close Feature
- Connection for E-Lock 12Volt
- Connections for Safety Infrared Sensors
- Waterproof enclosure included

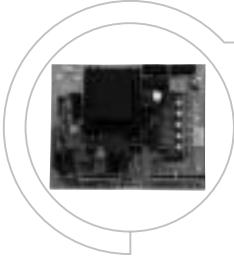
*For more information refer to Specification Chart*



## CB1-120 Wing Gate Electronic Control for 120 Volt

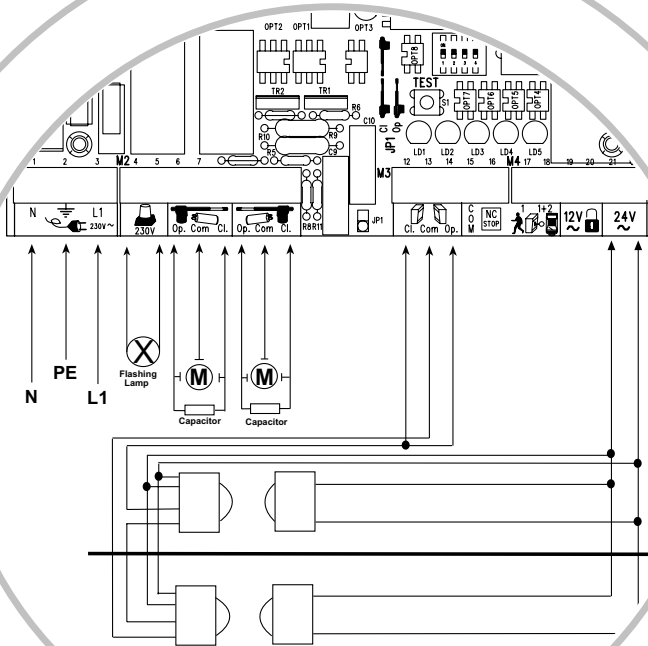
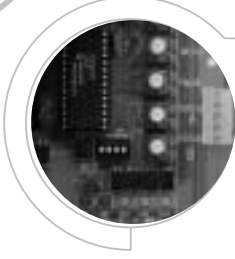
- Power/Force adjustment for each wing
- Adjustable wing delay
- Pedestrian opening function
- Adjustable automatic close
- 5-Pin Receiver connection (801719)
- Auto-close Feature
- Connection for E-Lock 12Volt
- Connections for Safety Infrared Sensors
- Waterproof enclosure included

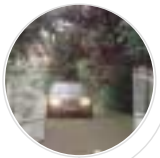
*For more information refer to Specification Chart*



## Easy Adjustment

- Easy simple adjustments
- Dip-Switches for different programming
- Test Button
- Coloured LED's indicate status of Logic



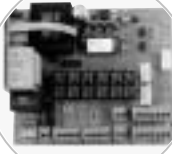


# Controls & Receivers - Wing Gates

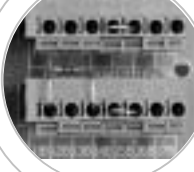
## GOC1A Advanced Electronic Control

- Individual power adjustment for each wing
- Unique safety system with force sensing and safety stop
- Adjustable wing delay
- Pedestrian function
- Adjustable automatic close
- 5 Pin Receiver (801719)
- Connection for Infrared System or Safety Edge
- IP55 protected PVC housing included
- Universal E-Lock Function

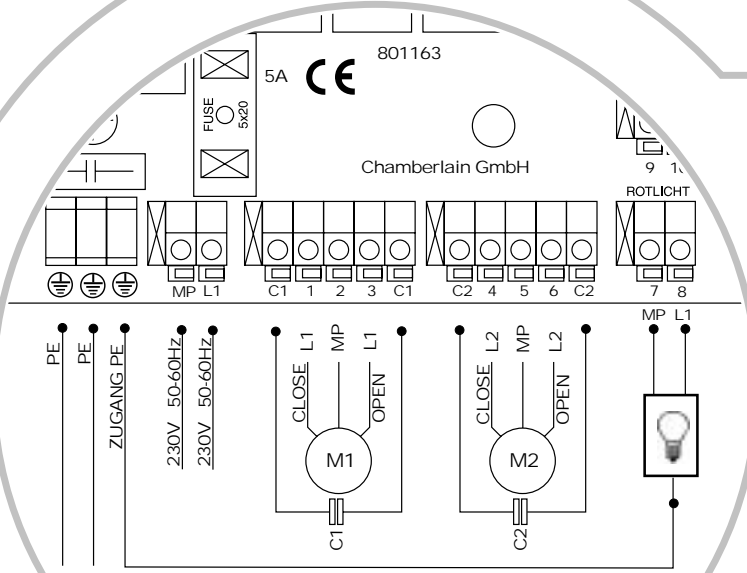
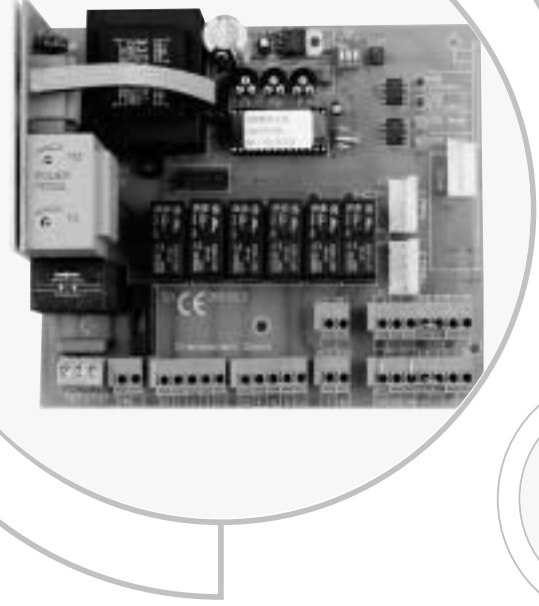
For more information refer to Specification Chart

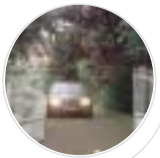


## GOC1A Fast Connection Terminals

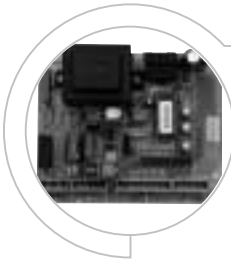


## GOC1A Power Adjustment



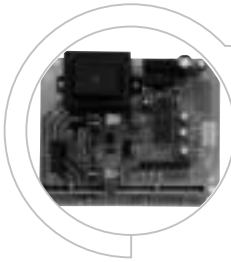
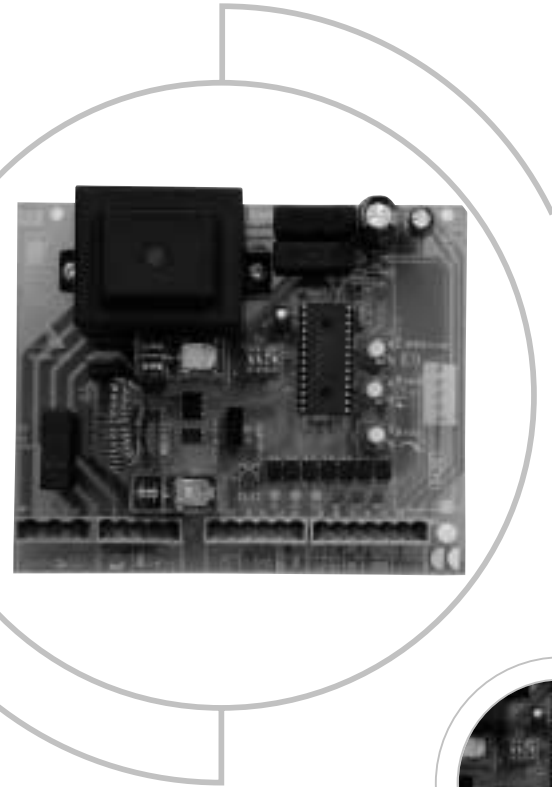
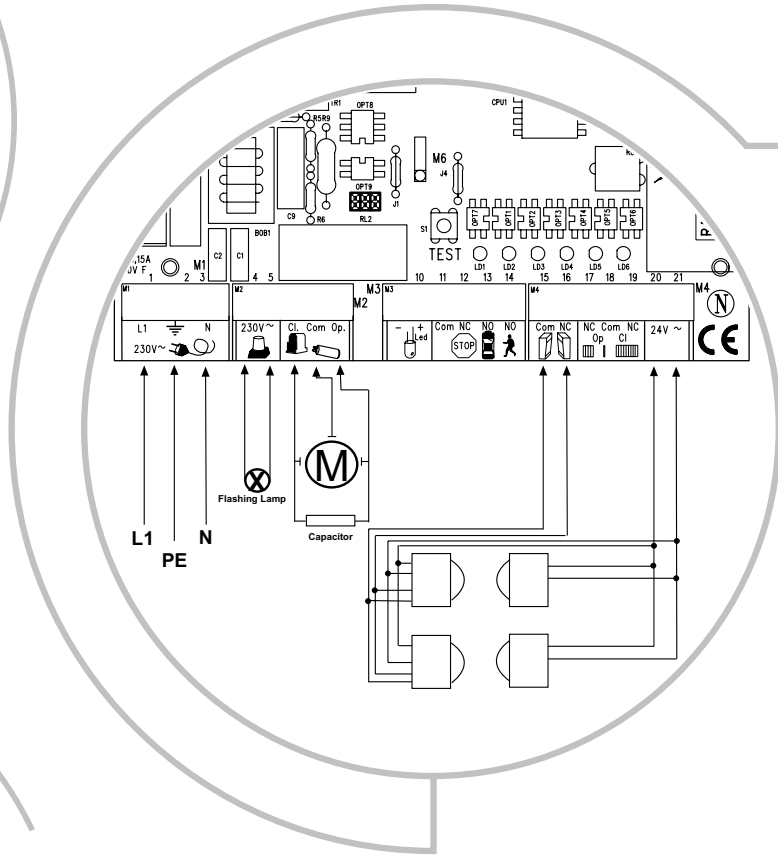
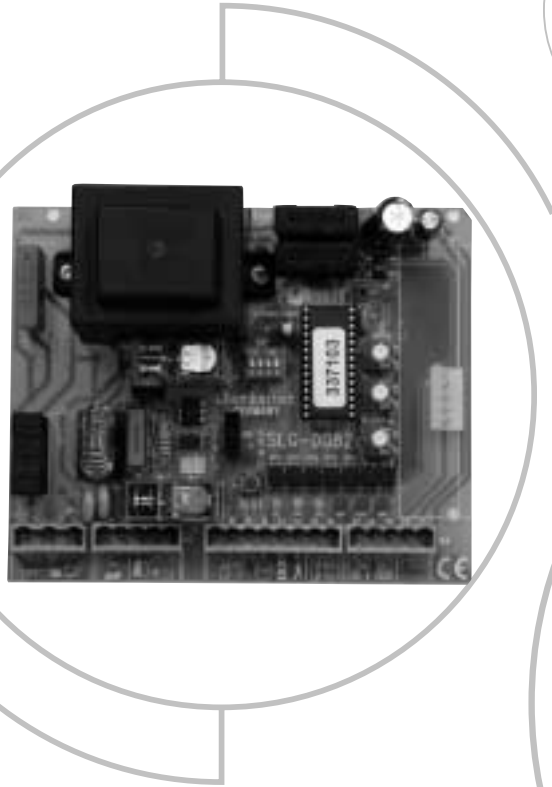


# Controls & Receivers - Sliding Gates



## CB2 Slide Gate Electronic control 230Volt

- Full power start (Ice brake function)
  - Connections for Safety Infrared Sensors
  - 5 Pin Receiver connection (801719)
  - Pedestrian opening function
  - Auto-close Feature
  - Adjustable active wing stop function (stops heavy wings faster)
  - RPM-Sensor connection
  - Enclosures for separate mounting outside or under the cover of the operators available – purchased separately.
- For more information refer to Specification Chart*

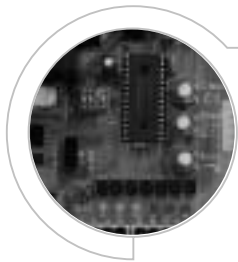


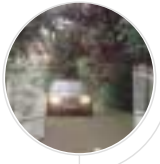
## CB2-120 Slide Gate Electronic control 120Volt

- Full power start (Ice brake function)
  - Connections for Safety Infrared Sensors
  - 5 Pin Receiver connection (801719)
  - Pedestrian opening function
  - Auto-close Feature
  - Adjustable active wing stop function (stops heavy wings faster)
  - RPM-Sensor connection
  - Enclosures for separate mounting outside or under the cover of the operators available – purchased separately.
- For more information refer to Specification Chart*

## Easy Adjustment

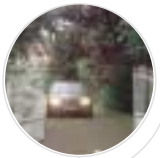
- Easy simple adjustments
- Dip-Switches for different programming
- Test Button
- Coloured LED's indicate status of Logic





# Specification Chart

	WING			SLIDE		
		GOC1A	CB1	CB1-120	CB2	CB2-120
Number of wings to be controlled		2	2	2	1	1
Voltage In	V AC	230	230	120	230	120
Voltage Out	V AC	230	230	120	230	120
Frequency	Hz	50	50	60	50	60
Power max.	W	1200	700	700	700	700
Stand By Power	W	2	6	6	6	6
Protection	Class	I	I	I	I	I
Degree of Protection w/Enclosure	IP	55	55	55	55	55
Fuses		1	4	4	3	3
Motor Power Settings		2	2	2	1	1
Active Wing Brake		n/a	n/a	n/a	yes	yes
Force Sensing w/Stop		yes	no	no	no	no
Max. Run Timer		yes	yes	yes	no	no
Wing Delay (Opening)		yes	yes	yes	n/a	n/a
Wing Delay (Closing)		yes	yes	yes	n/a	n/a
Safety Infrared Connection 100263		yes	yes	yes	yes	yes
RPM Safety Reversing Sensor		n/a	n/a	n/a	option	option
Safety Infrared Connection 770E		yes	no	no	no	no
8,2K Ohm IR - Test System		yes	no	no	no	no
Pedestrian Opening (single wing)		yes	yes	yes	yes	yes
Full Opening (two wings)		yes	yes	yes	yes	yes
Hold to run function		yes	yes	yes	no	no
Automatic Closing		yes	yes	yes	yes	yes
E-Lock Connection		yes	yes	yes	no	no
Flashing Light Connection		yes	yes	yes	yes	yes
Limit Switch contacts		yes	no	no	yes	yes
Test Button		yes	yes	yes	yes	yes
2-channel Radio Adapter 801719 (max. 15 Remote Controls/channel)		option	option	option	option	option



## WGO200 Kit for Gates with 2.0m/200kg wings

### Included:

- Motor Arms, Left and Right, 12 Volt
- Electronic Controls Including Transformer and Case
- 3-Channel Mini Remote Control 433.92 MHz
- Mounting Hardware (Brackets, Bolts) for Gate and Posts
- Outdoor Antenna
- Flashing Light

### Features:

- Wide pillars are no problem due to the long arms (400mm). Rotation distances up to 26cm are possible.
- Adjustable post mounts for quick assembly.
- Motor performance with self-delay mechanism and safe 12 Volt technology.
- Safe, simple advanced electronics with separate transformer, 230V, 50/60Hz, max. 6A.
- One- and two-wing operation is possible with remote control or switch.
- Adjustable automatic gate closing time.
- Connection for photocells (100263).
- Connection for outside lights.
- E-lock connection available (12 Volt).
- Battery connection possible. The battery charge is regulated through control panel.
- Solar power suitable: Batteries can be charged through a solar panel (not included).



**2 YEARS FULL WARRANTY**  
**CE, TÜV GS and TÜV tested**



# Receivers

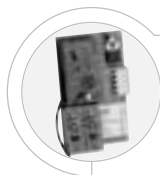
## 801719 2-Channel Receiver

### Frequency 433.92MHz

- 5-Pin connection
- 433MHz superheterodyne RF Module
- For LiftMaster remote controls
- Direct plug-in module for control boards GOC1A, GOC2A, CB1, CB2
- External antenna connection included

Modulation: AM  
Memory: Accepts 15 codes

**2 Year Warranty on Receiver**



## 8002E 2-Channel Universal Receiver IP55

### All Frequencies

- Two channels
- Accepts LiftMaster RF modules
- RF module not included
- External power connection
- Test button
- Potential free output
- Water resistant plastic housing IP55
- Antenna

Memory: 15 codes each channel:  
13 computer codes,  
1 DIP-switch code,  
and 1 wireless keyless  
entry system code

Voltage: 9 to 35V AC/DC  
Relay: 6A/60V max  
Range: Approximately 45m  
*Please note: Order RF module separately*

**2 Year Warranty on Receiver**



## 7430E Universal Receiver

### Frequency 433.92MHz

- One channel
- Illuminated push-button
- Optional Plug-in AC transformer terminal
- Can be mounted on wall with wood screws provided, or piggy-back mounted directly to terminal strip of garage door openers with mounting strips (also provided)
- Has jumper option for momentary or constant relay contact
- 3 screw terminal connections on outside of case

Type: AM superregenerative  
Memory: Accepts 12 computer codes, 1 DIP switch code, and 1 wireless keyless entry system code

Voltage: 8 to 35V AC or DC with automatic selection  
Range: Approximately 45m

Output Control: Relay switches up to 5A  
**3 Year Warranty on Receiver**



## 7433E Three Channel Co-axial Universal Receiver

### Frequency 433.92MHz

- Three independent channels (one can be set for normally closed operation)
- Optional Plug-in AC transformer terminal
- External co-axial antenna included
- 455mm color-coded wire leads for each channel provided
- Continuous contact closure
- Open/Close/stop function
- Potential free output

Type: AM superregenerative  
Memory: Each channel accepts 4 computer codes, 1 DIP switch code and 1 wireless keyless entry system code

Voltage: 18-35V AC or DC with automatic recognition  
Range: Approximately 45m  
Output Control: Relay switches up to 5A  
**3 Year Warranty**



## RXCA-27 2-Channel Receiver RXCA-433 2-Channel Receiver

### Frequencies 27.145MHz & 433.92MHz

- For use in GOC1 & GOC2
- Enables the use of LiftMaster transmitters
- Plug-in pin connections match with Casali gate opener control board
- Two *Smart* buttons for fast programming

Modulation: FM  
Modulation: AM  
Memory: Accepts 4 computer codes, 1 DIP switch code, and 1 wireless keyless entry system code

**2 Year Warranty on Receiver**





# Receivers

## 801702 2-Channel Receiver Adapter

### All Frequencies

- 5-Pin connection
- Order RF module separately
- For LiftMaster remote controls
- Direct plug-in module for control boards GOC1A, GOC2A, CB1, CB2
- External antenna connection included

Memory: Accepts 15 codes

**2 Year Warranty on Receiver**

## RF Modules

### 801429

#### Frequency 27.145MHz

- Superheterodyne
- For LiftMaster transmitters
- Direct plug-in to 801702, 801337 or 8002E

Modulation: FM

**2 Year Warranty**

### 801504

#### Frequency 433.92MHz

- Superregenerative ("Standard")
- For LiftMaster transmitters
- Direct plug-in to 801702, 801337 or 8002E

Modulation: AM

### 801221

#### Frequency 433.92MHz

- Superheterodyne ("Narrow-band")
- For LiftMaster transmitters
- Direct plug-in to 801702, 801337 or 8002E

Modulation: AM

### 203278

#### Frequency 390MHz

- Superregenerative
- For GDO and GTO
- Use with 801702, 801337 & 8002E
- Extension pins inclusive

### 203360

#### Frequency 315MHz

- Superregenerative
- For GDO and GTO
- Use with 801702, 801337 & 8002E
- Extension pins inclusive

# Remote Controls

## 433.92MHz

Featuring computer programmed security codes on the European harmonized frequency.

Modulation: AM

Range: Approximately 45m

Operating temperature: -40°C to +65°C

Weight: 55g standard (25g mini)

Dimensions: 40x87x19mm standard

37x62x10mm mini

### 4330E 1-Channel Remote Control Transmitter

- One of 3.5 billion factory preset codes
- Operates with two 3V batteries (included)
- Visor clip included
- Green LED indicates battery strength

### 4332E 2-Channel Remote Control Transmitter

- One channel — DIP switch/19,683 codes
- Second channel 3.5 billion code
- 12V battery and visor clip included
- Green LED indicates battery strength

### 4333E 3-Channel Remote Control Transmitter

- Each channel one of 3.5 billion codes
- Operates with two 3V batteries (included)
- Visor clip included
- Green LED indicates battery strength

### 4335E Mini Remote Control Transmitter

- Three channels
- Each channel one of 3.5 billion codes
- Operates with two 3V batteries (included)
- Key ring included

## 27.145MHz

All transmitters come with LED light that indicates battery strength, 9V battery, visor clip and visor clip retainer.

Featuring computer programmed security codes on the European harmonized frequency.

Modulation: FM

Weight: 127g

Range: Approximately 45m

Dimensions: 51x100x22mm

Operating temperature: -40°C to +65°C



### 750E 1-Channel Remote Control Transmitter

- Computer-programmed security code
- One of 3.5 billion factory preset codes
- Green LED indicates battery strength

### 751E 1-Channel Remote Control Transmitter

- DIP switch coded — 19,683 code
- Red LED indicates battery strength

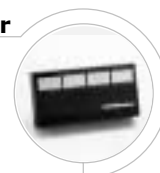


### 752E 2-Channel Remote Control Transmitter

- One channel — DIP switch/19,683 codes
- Second channel 3.5 billion code
- Green LED indicates battery strength

### 754E 4-Channel Remote Control Transmitter

- One channel — DIP switch/19,683 codes
- Three channels 3.5 billion code
- Green LED indicates battery strength



## 390MHz



### 970LM Mini Transmitter

- Three channels 3.5 rolling code
- Operates with two 3V batteries
- Key ring included

## 315MHz

### 970-315LG Mini Transmitter

- Three channels 3.5 rolling code
- Operates with two 3V batteries
- Key ring included



## Keyless Entry Products

Mounts on the garage door jamb. Choice of over 10,000 4-digit personal codes. Weatherproof construction and flip-top cover. Includes installation hardware and battery. Receiver remembers codes after power outages.

### 727E Wireless Keyless Entry System

#### Frequency 27.145MHz

- Back-lit keyboard for easy use in the dark
- Can control multiple doors
- Includes: keypad, 9V (3x3V Li) battery, and mounting hardware

Modulation: FM

Weight: 165g

Dimensions: 55x165x20mm

### 747E Wireless Keyless Entry System

#### Frequency 433.92MHz

- Back-lit keyboard for easy use in the dark
- Can control multiple doors with a separate code
- Includes: keypad, 9V battery, and mounting hardware

Modulation: AM

Weight: 165g

Dimensions: 55x165x20mm

### 40E Wireless Keyless Entry System

- Electronics installed inside the garage
- Lighted keyboard for easy use in the dark
- 18-35V control voltage (keypad)

Weight: 430g

Dimensions: 55x160x20mm



# Safety Accessories



## FLA230-2 Flashing Light Kit

- 230 Volt
- Constant Signal Input
- Flash board included
- Antenna & cable included
- Can be mounted on walls

## 100263 Infrared Sensor System "Relay"

- Compatible to all common electronic controls
- Approved system
- 12-35 Volt - Wiring NO or NC
- Range: approx. 20m

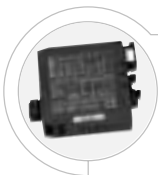
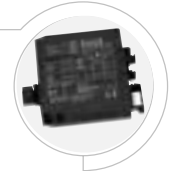


## 770E The Protector System™ Infrared non-impact safety sensor

- IP56
- Current draw — 13ma maximum
- Operating voltage — 6V
- Works with GOC1A and module 801689
- Red light LED indicates IR beam continuity
- Heavy duty steel brackets protect sensors from misalignment and damage
- Includes: emitter, detector, steel brackets, wires and installation hardware

## 203292 Loop Detector 1 Channel

- 24V AC/DC
- IP40
- Requires no special loop wire
- Training manual available GB/D
- For Safety or as switch to use

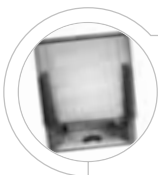
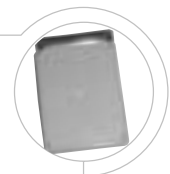


## 203308 Loop Detector 2 Channel

- 24V AC/DC
- IP40
- Requires no special loop wire
- Training manual available GB/D
- For Safety or as switch to use
- For Direction detecting or 2 single loops

## 203391 Outside Mount Box

- For Controls CB1/CB2/GOC1/GOC2 & more
- IP 55
- Strain reliefs included

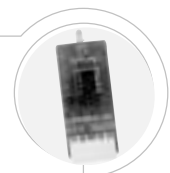


## 600039 Inside Mount Slider Box

- For CB2 or GOC2
- For logic boards 145 x 120
- Suitable for common controls
- Mounting of control board under the cover

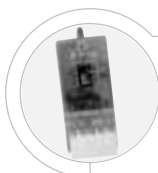
## 801689 Safety Module for operation with 770E and electronic control GOC1A

- System is fail-safe
- Easy to install
- Function indicator



## 801696 Safety Module for operation with 100263 and electronic control GOC1A

- For IR Sensors and Sensing Edge fail-safe compliance with ZH 1/494
- Diode
- Also use with sensing edge





# Safety Edges



## **600046 2.5m (8 ft.) Safety Edge Set (Small)**

- 2.5m (8 ft.) rubber profile
- 2.5m (8 ft.) rubber profile mounting rail
- Assembly Pack (Small) required

## **600053 20m (66 ft.) Bulk Pack Safety Edge Profile (Small)**

- 20m (66 ft.) rubber profile



## **600138 20m (66 ft.) Bulk Pack Safety Edge Profile (Medium)**

- 20m (66 ft.) rubber profile medium
- Assembly Pack 600152 required

## **600169 1m (3.2 ft.) Safety Edge Profile (Medium)**

- 1m (3.2 ft.) rubber profile medium
- Assembly Pack 600152 required



## **600176 1m (3.2 ft.) Safety Edge Profile (Large)**

- 1m (3.2 ft.) rubber profile large
- Assembly Pack 600152 required



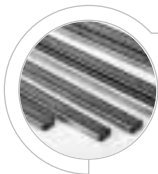
## **600060 Assembly Pack Safety Edge (Small)**

- Assembly Pack required for each Safety Edge
- Closure cap
- Plug with cable
- Connection plug 8.2K ohm
- Cyanacrylat adhesive - 3g
- Abrasive paper



## **600152 Assembly Pack Safety Edge (Medium/Large)**

- Assembly Pack required for each Safety Edge
- Closure cap
- Plug with cable
- Connection plug 8.2K ohm
- Cyanacrylat adhesive - 3g
- Abrasive paper



## **600077 20m Bulk Pack Mounting Rail Safety Edge**

- Rail in 2.0 m length each
- Water-resistant
- Fits for all Safety Edges



## **600213 Interface Box for Safety Edges**

- Universal Interface Box for Safety Edge
- IP55
- TÜV approved
- Suitable for all Gate Opener applications
- Safety Disabler
- Not required for GOC1A



# Accessories

## 3LM LiftMaster 3-Volt Batteries

- 10 batteries per pack
- CR2016



## 12LM LiftMaster 12-Volt Batteries

- 10 batteries per pack



## 25LM LiftMaster 9-Volt Batteries

- 10 batteries per pack



## 760E Outside Key Lock

- 12 tumblers provide double locking action
- Self-cleaning barrel action
- Weather-resistant aluminum face plate
- Cannot be shorted out from the exterior
- Includes: lock, wire, hardware and two keys



## 100010 Keyswitch 1-Function, Surface Mount

- Profile half cylinder
- 75x75x60, ø60 x 51 deep
- IP54, 3 keys



## 100027 Keyswitch 1-Function, Flush Mount

- Profile half cylinder
- 75x75x50
- IP54, 3 keys



## 100034 Keyswitch 2-Function, Surface Mount

- Profile half cylinder
- 75x75x50
- IP54, 3 keys



## 100041 Keyswitch 2-Function, Flush Mount

- Profile half cylinder
- 75x75x50
- IP54, 3 keys



## 23009E Transformer 230V/9V/AC 23024E Transformer 230V/24V/AC

- CEE 7/16 Europlug
- Cable - 1m



## 203285 E-Lock 12 Volt 600022 E-Lock 24 Volt

- 12-24 Volt AC/DC power
- Heavy-duty construction
- Compatible to all locks
- Release Force up to 200kg



## 203315 Standard Hardstop

- 122mm x 100mm
- 37mm and 19mm high
- Zinc coated
- For screw mount



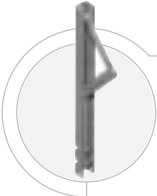
## 203322 Hard Stop High

- 72mm x 100mm
- 70mm high
- Zinc coated
- For concrete mount



## 203339 Mechanical Floor Lock for Double Wings

- Locks one wing of a double wing gate
- Second wing can be locked with an E-lock then
- Avoids usage of floor locks

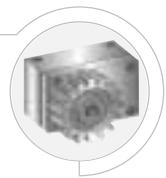




# Accessories

## 203346 Wing Buffer

- For rising Sliding Doors up to 500kg + 10° max.
- Secures wing also when operator is released
- For outside use
- Direct connected to rail (Modul 4)
- No power required



## 600008 IR Sensor Stand - 530mm

- Universally accommodates any IR Sensor
- Powdercoat paint finish for rust resistance
- Heavy-duty steel construction



## 600015 Key Switch Stand - 1100mm

- Recommended for all Keyless Entry Code Systems
- Recommended for Flush Mount Switch
- Powdercoat paint finish for rust resistance
- Heavy-duty steel construction



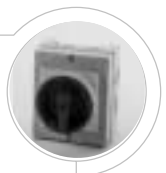
## 600084 Emergency Stop

- IP65
- VDE 0660
- Plastic enclosure
- 71.6x71.6x47.5



## 600091 Main Switch

- IP65
- VDE 0660
- Plastic enclosure
- 71.6x71.6x47.5



## 600220 Coil Cable

- Maximum Extension 2.5 - 3.0m
- For Sliding Doors up to 5m
- For Wing Gates
- For Safety Edges



## 600190 Backup Battery

- 12 Volt/7AH
- For WGO200
- 150x90x47



## 600206 Solar Panel

- For WGO200 (2 recommended)
- 930x317x12.5mm
- Weight 4.1kg
- 12V/12W/0,75A (max.)
- -40°C to + 85°C
- Life Expectancy: 20 Years



## ANT4X-1LM Remote Antenna Mounting Kit

For use with the co-axial antenna connection on LiftMaster with 433.92MHz radio controls when remote operation is needed.

- Kit contains: 433.92MHz antenna, adapter, antenna bracket and 6.0m of cable.



## 16200LM Limit Switch

- In case no hard-stops are available
- Prevents operator from activating when the switch/pedestrian door is open
- Easy to install as normal release function (NO) or normal closure function (NC)
- IP67



## The LiftMaster™ Dealer Extranet... A Password Protected Website Designed Exclusively For You!

Now you can access the latest product information, technical bulletins, promotional offerings, place orders and check shipping status ... all from your computer 24 hours a day. 7 days a week.

Use your login and password to log on to the Dealer Extranet at <http://b2bnet.liftmaster.com>. With your catalog in hand placing an order on the website is easy.

First make a note of the model you wish to order that is in the catalog.



### 4333E 3-Channel Remote Control Transmitter

- Each channel one of 3.5 billion codes
- Operates with one 12V battery (included)
- Visor clip included
- Green LED indicates battery strength

Second log on to the internet and go to the shopping cart.



Enter the model number from above in the "Add to Cart" box. then click on add to cart. Add the products you need, and adjust the quantities and click on "update the shopping cart".



The third step is to Click on: GET DEALER PRICING.



Then Click on PREPARE THE ORDER. And fill in all of the areas that are empty. Finally click on: Place Order and your are finished.

## **Chamberlain Professional Products Customer Service**

### **Germany**

Alfred-Nobel-Str. 4  
66793 Saarwellingen  
Germany  
Tel.: +49(0)6838/907-250  
Fax: +49(0)6838/907-179

### **USA**

845 Larch Ave.  
Elmhurst, Ill., 60025  
USA  
Tel.: +1 630-993-6025  
Fax: +1 630-530-6751

## **Chamberlain Professional Products Branch Offices**

### **UK**

18 Galena Close  
Sonora Fields  
Sittingbourne, Kent ME10 5GA  
Tel.: (+44) 01795 436436  
Fax: (+44) 01795 436136

### **Scandinavia**

St. Jorgensvei 77  
0662 Oslo  
Norway  
Tel.: (+47) 97 59 11 18

### **Benelux**

Postbus 10169  
1001ED Amsterdam  
The Netherlands  
Tel.: (+31) 020-673-3626  
Fax: (+31) 020-673-3610

### **France**

13, Allée des Erables  
appt no 126  
45650 Saint-Jean le Blanc  
Tel.: (+33) 03 87 98 15 84  
Fax: (+33) 03 87 95 48 16

### **NE Europe**

ul. Sportowa 10/17  
35111 Rzeszow  
Poland  
Tel.: (+48) 17 850 7950  
Fax: (+48) 17 853 0122

### **SE Europe**

Deviata 4/A  
83101 Bratislava  
Slovakia  
Tel.: (+421) 2 5479 3727  
Fax: (+421) 2 5465 2932

### **Asia**

Chamberlain Pte Ltd.  
6-C Tanjong Rhu Road  
10-02 La Ville  
Singapore  
Tel.: (+65) 342 0418  
Fax: (+65) 346 2248

### **China**

Chamberlain Pte Ltd. Beijing Office  
East Room 304 Building 17#  
Tuanjiehu Road ChaoYan  
CN - 100026 Beijing  
Tel.: (+86) 10 8596 5364  
Fax: (+86) 10 8596 5373



[www.liftmaster.com](http://www.liftmaster.com)

<http://b2bnet.liftmaster.com>

[info@chamberlain.com](mailto:info@chamberlain.com)

© Chamberlain GmbH, 2002

LMGT0C02-GB