

# PRODUCT CATALOG

## RESIDENTIAL GARAGE DOOR OPENER SYSTEMS



## RADIO CONTROL PRODUCTS Door and Operator Accessories

01.06.2004

CHAMBERLAIN™  
**LiftMaster™**  
PROFESSIONAL



# Residential Garage Door Opener Systems

## DC Drive

All DC operators come with automatic-learn force sensing, easy to program electronic limits, rolling code technology, energy saving transformer, quick-connect wire terminals, logic board with diagnostics, 1-light\*230V/40W with 2.5 minute adjustable light delay, antenna, door-in-door and flashing light connection.

Specify operator head and 30mm chain or belt steel C-rail separately.

## LiftMaster1000 DC Drive Garage Door Operator



### LiftMaster1000 DC Drive Garage Door Operator

with: 24V DC motor  
Smooth, soft-start/soft-stop  
Chain or belt drive  
Automatic close timer  
24V DC power terminal  
Motion sensing multi-function control panel  
Rail to head quick connect

**5-Year Motor/2-Year Full Warranty**

TÜV tested to meet EN12453 without IR sensors on doors up to 130kg / 13.5m<sup>2</sup>

### Operator head options:

**Model No.**

**LM1000A**

**LM1000AGB**

### Description

1000N 230-240V/50Hz 190W Tn=10Nm  
Reduction means: Gear 63:1  
Lifting capacity: Automatic 0-100kg  
Travel rate: appx. 160mm/s  
Shipping weight - head: 7.5kg  
Stand-by power consumption: 5.5W

### Radio:

433.92MHz Smart superheterodyne receiver  
64 Memory registers  
One 3-channel mini remote control with rolling code

With 12-language EU instructions and Schuko cord-set  
With UK 3-pin fused cord-set

## LiftMaster800 DC Drive Garage Door Operator

### LiftMaster 800 DC Drive Garage Door Operator

with: 24V DC motor  
Smooth, soft-start/soft-stop  
Chain or belt drive  
Automatic close timer  
24V DC power terminal  
Multi-function control panel  
Rail to head quick connect

**4-Year Motor/2-Year Full Warranty**

TÜV tested to meet EN12453 without IR sensors on doors up to 110kg / 13.5m<sup>2</sup>

### Description

800N 230-240V/50Hz 165W Tn=8Nm  
Reduction means: Gear 63:1  
Lifting capacity: Automatic 0-80kg  
Travel rate: appx. 160mm/s  
Shipping weight - head: 7.5kg  
Stand-by power consumption: 5W

### Radio:

433.92MHz Smart superheterodyne receiver  
32 Memory registers  
One 3-channel mini remote control with rolling code

### Operator head options:

**Model No.**

**LM800A**

**LM800AGB**

With 12-language EU instructions and Schuko cord-set  
With UK 3-pin fused cord-set



## LiftMaster600 DC Drive Garage Door Operator



### LiftMaster 600 DC Drive Garage Door Operator

with: 24V DC motor  
Smooth, soft-start/soft-stop  
Chain or belt drive  
Illuminated push button  
Rail to head quick connect

**3-Year Motor/2-Year Full Warranty**

TÜV tested to meet EN12453 without IR sensors on doors up to 90kg / 10.7m<sup>2</sup>

### Operator head options:

**Model No.**

**LM600A**

**LM600AGB**

### Description

600N 230-240V/50Hz 130W Tn=6Nm  
Reduction means: Gear 63:1  
Lifting capacity: Automatic 0-60kg  
Travel rate: appx. 160mm/s  
Shipping weight - head: 7.5kg  
Stand-by power consumption: 5W

### Radio:

433.92MHz Smart superheterodyne receiver  
16 Memory registers  
One 3-channel mini remote control with rolling code

With 12-language EU instructions and Schuko cord-set  
With UK 3-pin fused cord-set

# Residential Garage Door Opener Systems



## AC Chain Drive

All AC operators come with automatic-learn force sensing, external mechanical limit adjustments, rolling code technology, energy saving transformer, quick-connect wire terminals, logic board with diagnostics, 1-light\* 230V/40W with 2.5 minute adjustable light delay, antenna, door-in-door and flashing light connection.

Specify operator head and 30mm chain steel C-rail separately.

## 5580 Chain Drive Garage Door Operator

### 5580 Chain Drive Garage Door Operator

with: Heavy-duty AC motor  
Chain drive  
Flip-down light lens  
Illuminated push button

### 2-Year Full Warranty

TÜV tested to meet EN12453 without IR sensors on doors up to 110kg / 13.5m<sup>2</sup>

### Operator head options:

**Model No.**

**5580**

**5580GB**

### Description

800N 230-240V/50Hz, 400W, 2.5A  
Reduction means: Gear 16:1  
Lifting capacity: Automatic 0-80kg  
Travel rate: appx. 133mm/s  
Shipping weight - head: 12.2kg  
Stand-by power consumption: 2.6W

### Radio:

433.92MHz Smart superheterodyne receiver  
Accepts 12 remote control codes, 1 DIP-switch code and 1 wireless keyless entry system code  
One 3-channel mini remote control with rolling code

With 12-language EU instructions and Schuko cord-set

With UK 3-pin fused cord-set



## 3780 Chain Drive Garage Door Operator

### 3780 Chain Drive Garage Door Operator

with: Heavy-duty AC motor  
Chain drive  
Flip-down light lens  
Illuminated push button  
24V DC power terminal

### 2-Year Full Warranty

TÜV tested to meet EN12453 without IR sensors on doors up to 110kg / 13.5m<sup>2</sup>

### Operator head options:

**Model No.**

**3780**

### Description

800N 230-240V/50Hz, 400W, 2.5A  
Reduction means: Gear 16:1  
Lifting capacity: Automatic 0-80kg  
Travel rate: appx. 133mm/s  
Shipping weight - head: 12.2kg  
Stand-by power consumption: 2.6W

### Radio:

Receiver and remote control are not provided  
24V DC radio control power terminal on rear end panel

With 12-language EU instructions and Schuko cord-set



\*Light bulbs not included

## Garage Door Operator Kit

### LiftMaster 60 DC Drive Garage Door Operator

with: 24V DC motor  
Soft-start/soft-stop  
Chain or belt drive  
Illuminated push button  
4-Piece C-Rail for 2.3m door height  
1 light\*24V/25W-included

### 2-Year Full Warranty

TÜV tested to meet EN12453 without IR sensors on doors up to 90kg / 10.7m<sup>2</sup>

### Model No.

**LM60K**

**LM60R**

**LM60K-GB**

**LM60R-GB**

Chain Drive

Belt Drive

Chain Drive

Belt Drive

### Description

600N 230-240V/50Hz 100W Tn=5 Nm  
Reduction means: Gear 63:1  
Lifting capacity: Automatic 0-60kg  
Travel rate: appx. 160mm/s  
Shipping weight: 12.5kg  
Stand-by power consumption: 4W

### Radio:

433.92MHz Smart superheterodyne receiver  
12 memory registers  
One 3-channel mini remote control with rolling code

With 12-language EU instructions and Euro cord-set

With 12-language EU instructions and Euro cord-set

With UK 3-pin fused cord-set

With UK 3-pin fused cord-set





# Residential Garage Door Opener Systems

## Rails

For LM1000A, LM800A, LM600A, 5580, 3780.  
Specify operator head and rail separately.  
All rails come with automatic chain or belt tensioner device.  
Required headroom clearance: C-rail - 30mm

### Model No.

**7017CR3**  
**7023CR3**  
**7025CR3**  
**7030CR3**  
**7423CR3**  
**7010CR3**  
**7020CR3**

### Description

1-piece C-rail, full chain, for 1.7m door  
1-piece C-rail, full chain, for 2.3m door  
1-piece C-rail, full chain, for 2.5m door  
1-piece C-rail, full chain, for 3.0m door  
4-piece C-rail, full chain, for 2.3m door  
1.0m C-rail extension kit, chain, master links, splice  
2.0m C-rail extension kit, chain, master links, splice

**8023CR3**  
**8025CR3**  
**8030CR3**  
**8423CR3**  
**8430CR3**  
**8010CR3**  
**8020CR3**

1-piece C-rail, belt, for 2.3m door  
1-piece C-rail, belt, for 2.5m door  
1-piece C-rail, belt, for 3.0m door  
4-piece C-rail, belt, for 2.3m door  
4-piece C-rail, belt, for 3.0m door  
1.0m Extension kit for C-rail, replacement belt for 4.0m door, splice  
2.0m Extension kit for C-rail, replacement belt for 5.0m door, splice

## Rail / Model Chart Recommendation:

	LM1000	LM800	LM600	5580	3780	LM60
<b>7017CR3</b>	X	X	X	X	X	
<b>7023CR3</b>	X	X	X	X	X	
<b>7025CR3</b>	X	X	X	X	X	
<b>7030CR3</b>	X	X		X	X	
<b>7423CR3</b>	X	X	X	X	X	<b>(Included)</b>
<b>7010CR3</b>	X	X		X	X	
<b>7020CR3</b>	X	X		X	X	
<b>8023CR3</b>	X	X	X			
<b>8025CR3</b>	X	X	X			
<b>8030CR3</b>	X	X				
<b>8423CR3</b>	X	X	X			<b>(Included)</b>
<b>8430CR3</b>	X	X				
<b>8010CR3</b>	X	X				
<b>8020CR3</b>	X	X				



### 41A780 Shim Adapter Bracket

- Lifts rail 8mm
- Provides slide-on connection
- Enables use of CR3 series rails on LM series operators with dark grey covers

the technology of the future



# LiftMaster Operator General Specifications



## LiftMaster Operator General Specifications

### General

Door Linkage: Adjustable door arm  
Logic Type: Solid-state microprocessor with built-in surge suppressor  
Solid-state light delay  
Force Adjustment: Segmented - Automatic learn  
Length of line cord: 1.2m

### Convenience/Safety

Emergency quick release  
Automatic trolley reconnect  
Trolley disconnect mode setting  
Ventilation/pet opening  
Safety stop and full reverse  
Up: Safety stop

### Digital Radio Controls

Logic boards feature the exclusive Smart Button for programming transmitter codes to receiver memory.  
RF Module: 433.92MHz - AM Superheterodyne  
Rolling Code or Billion Code decoding  
Operating Temperature: -30°C to +65°C  
Battery (Remote Control): 2x3V or 1x3V(94335E)

Remote control may be programmed from operator or control panel.  
Remote control may be programmed to control the opener light.  
Remote control may be programmed to an open/close/stop function.  
2-1/2 minute light timing adjustable to 1-1/2, 2-1/2, 3-1/2, 4-1/2 minutes.  
Operator light may be programmed to turn on when IR beam is broken.



## Diagnostics



### LM1000A LM800A LM600A LM60

1 Flash:	The Protector System™ open, misaligned or an object has broken IR beam for more than 4 seconds.
2 Flashes:	The Protector System™ wire shorted or connected backwards.
3 Flashes:	Door or wall control button wire shorted
4 Flashes:	IR sensor slightly misaligned (dim or flashing sensor LED) or partially blocked
5 Flashes:	No RPM in the first second of travel. Motor has stalled or the electronics did not see the RPM signal. The unit will stop or reverse in 1 second.
6 Flashes:	RPM caused a reversal (low force setting)
7 Flashes:	Bad logic board (Unplug and reconnect operator)
9 Flashes:	No passpoint detected during travel.
Rapid Flashing:	Transmitter code being received (Operator not necessarily programmed to respond)

### 5580 3780

1 Flash:	The Protector System™ open, misaligned or an object has broken IR beam for more than 4 seconds.
2 Flashes:	The Protector System™ wire shorted or connected backwards.
3 Flashes:	Door or wall control button wire shorted
4 Flashes:	IR sensor slightly misaligned (dim or flashing sensor LED) or partially blocked
5 Flashes:	No RPM in the first second of travel. Motor has stalled or the electronics did not see the RPM signal. The unit will stop or reverse in 1 second.
6 Flashes:	RPM caused a reversal (low force setting)
Rapid Flashing:	Transmitter code being received (5580 only) (Operator not necessarily programmed to respond)

Install all operators to EN12453 and/or IEC60335-95-2

All LiftMaster operators meet or exceed all applicable EU regulations.

All trolley operator impact forces, force sensing, door, weight, and size ratings have been tested and verified by TÜV-Rheinland.

All operators carry TÜV approval and CE marking.

All operators are HomeLink compatible.



# BAS300

## "Porte basculante" operator

### Residential Garage Door Opener Systems

#### BAS300 "Porte basculante" Garage Door Operator Description

with: Heavy-duty AC motor  
 Built-in garage light  
 Push button on cover  
 Manual release with key  
 Water resistant enclosure

#### Model No. BAS300K

With 1x 3-channel mini-transmitter (94335E),  
 IR-Sensors (771E), limit switches, RPM-sensor, control  
 board (CB3), 433MHz  
 Superheterodyne rolling code radio

350Nm 230-240V/50Hz, 400W, 1.8A  
 Reduction means: Gear 700:1  
 Lifting capacity: 1 motor 8m<sup>2</sup>, 2 motors 14m<sup>2</sup>  
 Degree of protection: IP44  
 Travel rate: approx. 14 sec (90°)  
 1 light 230V/40W  
 Shipping weight - head: 11.5kg  
 Stand-by power consumption: 6W  
 Nemko tested to meet EN12453 with  
 IR sensors on doors up to 14.0m<sup>2</sup>

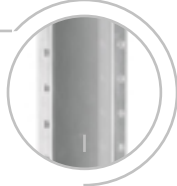
#### BAS300

For dual operator use

#### BAS-1-130

##### Reinforcement rail, 130cm standard

- 130cm long
- Ideal to mount the BAS300 to the door
- Provides easy mounting of operator to door
  - Zinc coated
- Enforces door and provides safe mounting platform



#### Transmission tubes

- BAS-2-22, 22 cm long**
- BAS2-150, 150 cm long**
- BAS-2-200, 200 cm long**

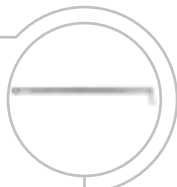
- Set of 2
- Zinc coated



#### BAS-3

##### Drive arms—straight

- Set of 2
- Standard drive arm
- Pre-positioned bushing for welding mount or screw mount of the transmission tube
- Welding connection at door frame



#### BAS-4

##### Drive arms—curved

- Set of 2
- Ideal drive-arm if garage door arm cross with the drive arm during operation
- Pre-positioned bushing for welding mount or screw mount of the transmission tube
- Welding connection at door frame



#### BAS-5

##### External release key

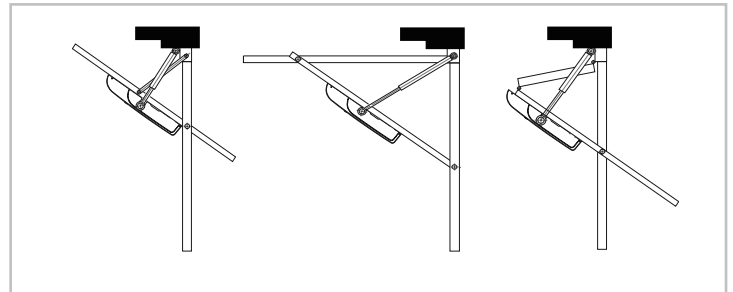
- Long Key
- Includes Outside cover



#### BAS-6

##### Safety Edge Corner Connection

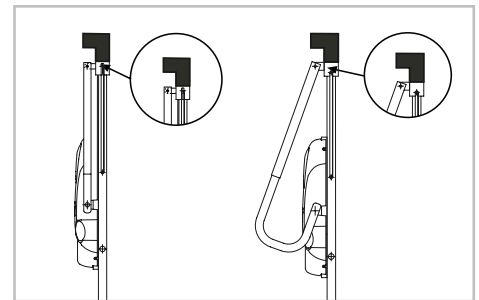
- Links safety edge around corners
- One long safety edge can be used
  - Reduces wiring at door or gate
  - For small safety edge profile



### 2-year warranty



Install all equipment in compliance with EN60335-2-103

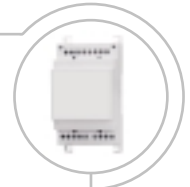


### Accessories

#### 207399

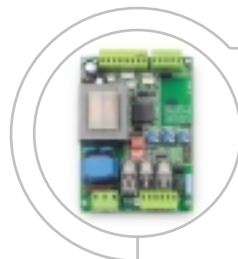
##### E-lock support board

- For CB3
- For use with 12Volt E-Locks
  - Provides output power and wire connection



#### CB3 Control board

- For BAS300
- Can be used for wing and sliding gate openers to suit special applications
- Built-in receiver
- Compatible with 100263, 770E or 771E IR sensors
- Auto-close function (with 770E or 771E)
- 8.2KOhm direct safety-edge connection
- E-Lock control function
- Limit switch inputs
- RPM-sensor input
- Independent force setting UP/DOWN
- Soft-Stop







## Remote controls

### 433.92 MHz

Featuring computer programmed security codes on the European harmonized frequency.

**Modulation:** AM

**Range:** Approximately 45m

**Operating temperature:** -40°C to +65°C

**Weight:**

**Billion Code**  
40g standard (25g mini)

**Dimensions:**

42x75x9mm standard  
37x62x10mm mini

**Rolling Code**

40g standard (20g mini)

42x75x9mm standard

36x60x8mm mini

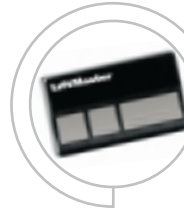
## Rolling Code



### 94330E

#### 1-Channel Remote Control

- Rolling code security
- Operates with two 3V battery CR2032 (included)
- Visor clip included
- Yellow LED indicates battery strength



### 94333E

#### 3-Channel Remote Control

- Rolling code security
- Operates with two 3V battery CR2032 (included)
- Visor clip included
- Yellow LED indicates battery strength



### 94335E

#### 3-Channel Mini Remote Control

- Each channel separate rolling code
- Operates with one 3V battery CR2032 (included)
- Key ring included

## Billion Code



### 4330E

#### 1-Channel Remote Control

- One of 3.5 billion factory preset codes
- Operates with two 3V batteries CR2032 (included)
- Visor clip included
- Green LED indicates battery strength



### 4332E

#### 2-Channel Remote Control

- One channel — DIP switch/19,683 codes
- Second channel 3.5 billion code
- 12V battery and visor clip included
- Green LED indicates battery strength
- 55 g / 40x87x9mm



### 4333E

#### 3-Channel Remote Control

- Each channel one of 3.5 billion codes
- Operates with two 3V batteries CR2032 (included)
- Visor clip included
- Green LED indicates battery strength



### 4335E

#### Mini Remote Control

- Three channels
- Each channel one of 3.5 billion codes
- Operates with two 3V batteries CR2016 (included)
- Key ring included



## 390 MHz

### 970LM Mini Transmitter

- Three-channels rolling code
- Operates with one 3V batteries CR2032
- Key ring included



## 315.15 MHz

### 9315CN Mini Transmitter

- Three-channels rolling code
- Operates with one 3V batteries CR2032
- Key ring included

# Remote Controls

## 27.145MHz



All transmitters come with LED light that indicates battery strength, 9V battery, visor clip and visor clip retainer. Featuring computer programmed security codes on the European harmonized frequency.

**Modulation:** FM  
**Range:** Approximately 45m  
**Operating temperature:** -40°C to +65°C

**Weight:** 127g  
**Dimensions:** 51x100x22mm



### 750E 1-Channel Remote Control Transmitter

- Computer-programmed security code
- One of 3.5 billion factory preset codes
- Green LED indicates battery strength
- 9 Volt battery



### 751E 1-Channel Remote Control Transmitter

- DIP switch coded — 19,683 code
- Red LED indicates battery strength
- 9 Volt battery



### 752E 2-Channel Remote Control Transmitter

- One channel — DIP switch/19,683 codes
- Second channel 3.5 billion code
- Green LED indicates battery strength
- 9 Volt battery



### 754E 4-Channel Remote Control Transmitter

- One channel — DIP switch/19,683 codes
- Three channels 3.5 billion code
- Green LED indicates battery strength
- 9 Volt battery

## Keyless Entry Products



### 9747E Wireless Keyless Entry System - Rolling code

**Frequency** 433.92MHz

- Back-lit keyboard for easy use in the dark
- Can control multiple doors with a separate code
- Includes: keypad, 9V battery, and mounting hardware
- With rolling security code

**Modulation:** AM  
**Weight:** 165g  
**Dimensions:** 55x165x20mm



### 747E Wireless Keyless Entry System - Billion code

**Frequency** 433.92MHz

- Back-lit keyboard for easy use in the dark
- Can control multiple doors with a separate code
- Includes: keypad, 9V battery, and mounting hardware

**Modulation:** AM  
**Weight:** 165g  
**Dimensions:** 55x165x20mm



### 40E Wired Keyless Entry System

- Electronics installed inside the garage
- Lighted keyboard for easy use in the dark
- 18-35V control voltage (keypad)

**Weight:** 430g  
**Dimensions:** 55x160x20mm



### 727E Wireless Keyless Entry System

**Frequency** 27.145MHz

- Back-lit keyboard for easy use in the dark
- Can control multiple doors
- Includes: keypad, 9V (3x3V Li) battery, and mounting hardware

**Modulation:** FM  
**Weight:** 165g  
**Dimensions:** 55x165x20mm



# STAR™250-433

## Access control receiver



- Universal receiver with antenna
- Rapid Learn™ feature programs multiple remote controls in seconds
- User-friendly programming technology makes it easy to add, block and delete up to 250 remote controls individually
- Ideal for gated communities, parking lots and garages
- Compatible with Chamberlain™, billion code, rolling code and keyless entry technologies
- 433.92 MHz
- Duplicate memory module may be removed for programming additional receivers or for safe back-up storage

# STAR™250-433

## specifications

Supply voltage:	12-24 volts AC or DC
Operating current:	250mA maximum
Oper. temp. range:	-40°C to +85°C
Frequency:	433.92 MHz
Relay contact rating:	1 amp @ 24 volts AC or DC
Warranty:	1 year

## STAR™250-433 optional accessories

Part number	Description
041A2743X	Watertight box field install kit
86LM	Antenna extension kit
23024E	Transformer 230V/24V/AC



optional weather-proof accessory box for STAR™ receiver

# STAR™250-433

## compatible remote controls

Billion Code	Rolling Code
4330E	94330E
4332E	94333E
4333E	94335E
4335E	
Keypads	Keypads
747E	9747E

The receiver will learn billion code, rolling code or dip-switch code remote controls simultaneously

### Digital display

Displays remote controls location numbers when programming or access is granted. Also displays user prompts and messages.

### Delete key

Used to delete a remote controls from the selected memory location.

### Add key

Used to enter remote controls and enter Rapid Learn™ mode.

### Star key

Used to enter advanced functions:

- \*,1-last remote controls received
- \*,2-no. of unused memory locations
- \*,3-no. of occupied memory locations
- \*,4-no. of blocked remote controls locations
- \*,5-first blocked remote controls location
- \*,7-software version #
- \*,0-audible diagnostic off/on

### Antenna connection

For connection to the direct antenna or the antenna extension kit

### Block key

Used to block receiver from granting access to the selected transmitter. Remote controls remains in memory, and may be unblocked in the future.

### Numeric keypad

Used for programming and querying remote controls locations. Also used to enter advanced functions.

### Pound key

used as an escape or exit key for all functions or modes.



## The technology.



# Receivers



## 801719 2-Channel Receiver

### Frequency 433.92MHz

- 5-Pin connection
- 433MHz superheterodyne RF Module
- For LiftMaster remote controls
- Direct plug-in module for control boards  
GOC1A, GOC2A, CB1, CB2, CB3
- External antenna connection included

### Billion & Rolling Code

**Modulation:** AM  
**Memory:** Accepts 15 codes  
rolling code or computer  
(billion) code

### 2-Year Warranty on Receiver



## 8002E 2-Channel Universal Receiver IP55

### All Frequencies

- Two channels
- Accepts LiftMaster RF modules
- RF module not included
- External power connection
- Test button
- Potential free output
- Water resistant plastic housing IP55
- Antenna

### Billion & Rolling Code

**Memory:** 15 codes each channel:  
13 computer codes  
or rolling codes  
1 DIP-switch code,  
and 1 wireless keyless  
entry system code

**Voltage:** 9 to 35V AC/DC  
**Relay:** 6A/60V max  
**Range:** Approximately 45m

*Please note: Order RF module separately*

### 2-Year Warranty on Receiver



## 7430E Universal Receiver

### Frequency 433.92MHz

- One channel-computer (billion) code
- Illuminated push-button
- Optional Plug-in AC transformer terminal
- Can be mounted on wall with wood screws  
provided, or piggy-back mounted directly  
to terminal strip of garage door openers  
with mounting strips (also provided)
- Has jumper option for momentary or  
constant relay contact
- 3 screw terminal connections on outside of case

### Billion Code

**Type:** AM superregenerative  
**Memory:** Accepts 12 computer  
codes, 1 DIP switch code,  
and 1 wireless keyless  
entry system code

**Voltage:** 8 to 35V AC or DC with  
automatic selection

**Range:** Approximately 45m  
**Output Control:** Relay switches up to 5A

### 3-Year Warranty on Receiver



## 7433E Three Channel Co-axial Universal Receiver

### Frequency 433.92MHz

- Three independent channels (one can  
be set for normally closed operation) -computer (billion) code
- Optional Plug-in AC transformer terminal
- External co-axial antenna included
- 455mm color-coded wire leads for each  
channel provided
- Continuous contact closure
- Open/Close/stop function
- Potential free output

### Billion Code

**Type:** AM superregenerative  
**Memory:** Each channel accepts 4  
computer codes, 1 DIP  
switch code and 1 wireless  
keyless entry system code

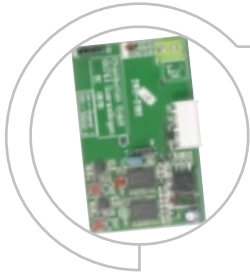
**Voltage:** 18-35V AC or DC with  
automatic recognition

**Range:** Approximately 45m  
**Output Control:** Relay switches up to 5A

### 3-Year Warranty on Receiver



## Receivers



### 801702 2-Channel Receiver Adapter

**Billion & Rolling Code**

#### All Frequencies

- 5-Pin connection
- Order RF module separately
- For LiftMaster remote controls
- Direct plug-in module for control boards GOC1A, GOC2A, CB1, CB2, CB3
- External antenna connection included

#### Memory:

Accepts 15 codes rolling code or computer (billion) code

**2-Year Warranty on Receiver**

## RF modules



### RF modules 801429

#### Frequency 27.145MHz

- Superheterodyne
- For LiftMaster remote controls
- Direct plug-in to 801702, 801337 or 8002E



### 801221

#### Frequency 433.92MHz

- Superheterodyne ("Narrow-band")
- For LiftMaster remote controls
- Direct plug-in to 801702, 801337 or 8002E

**Modulation:** AM



## Radio Control Accessories



### 86LM Receiver Remote Antenna Mounting Kit

For use with 3-Channel Universal Receiver models when remote operation is needed

- Kit contains: antenna bracket and 4.5m of cable.



### ANT4X-1LM Garage Door Opener Remote Antenna Mounting Kit

For use with the co-axial antenna connection on LiftMaster Garage Door Openers with 418MHz or 433.92MHz radio controls when remote operation is needed.

- Kit contains: 418/433.92MHz antenna, adapter, antenna bracket and 6.0m of cable.

# Door and Operator Accessories



## 3LM

### LiftMaster 3-Volt Batteries

- 10 batteries per pack
- CR2016
- For Mini-transmitter 4335E



## 12LM 12-Volt Batteries

- 10 batteries per pack
- For 433.92 MHz remote controls with LED on top face



## 25LM 9-Volt Batteries

- 10 batteries per pack
- For 9747E/747E keypad and 27MHz remote controls



## 75LM Illuminated Doorbell Push-button

- Non-Polarized installation
- High-impact, weather-resistant plastic construction
- Will work with either AC or DC openers
- Includes: push button and mounting screws



## 89LM Vibration Isolator Kit

- Installs between operator and ceiling mount
- Reduces noise from transmitted vibration
- Includes: two vibration isolators, lock-washers and nuts



## 78LM Multi-Function Control Panel

- Large actuator button with continuous illumination via an LED
- Large lock and light buttons
- The lock/security switch, when activated, prevents the operator from receiving remote control signals
- Light switch turns the garage door opener light on and off
- Wire routing through all 4 sides of panel
- For use on LiftMaster Garage Door Openers with 3 terminal connections manufactured after 01.01.95



## 98LM Motion Detecting Control Panel

- Passive infrared sensor (PIR) will automatically turn on the garage door opener light(s) when a person enters the sensing area
- Can be used in place of a standard illuminated push button or multi-function control panel
- Same functional features as model 58LM/78LM multi-function control panels
- 150° PIR sensing angle
- On/off switch
- Light sensitivity adjustment
- Illuminated push button
- Soft white plastic housing for a *finished* look in garage
- For use on LiftMaster Garage Door Openers with 3 terminal connections manufactured after 01.01.95



## Door and Operator Accessories (continued)



### 760E Outside Key Lock

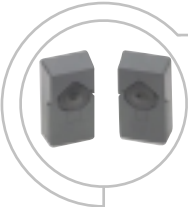
- 12 tumblers provide double locking action
- Self-cleaning barrel action
- Weather-resistant aluminum face plate
- Cannot be shorted out from the exterior
- Includes: lock, wire, hardware and two keys



### 770E The Protector System™

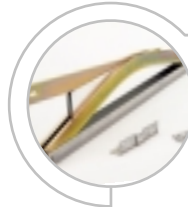
Infrared non-impact safety reversing sensor

- For use with LiftMaster Garage Door Openers
- IP56
- Current draw — 13ma maximum
- Operating voltage — 6V
- Operating temperature range: -40°C to +70°C
- Red light LED indicates IR beam continuity
- Heavy duty steel brackets protect sensors from misalignment and damage
- Includes: emitter, detector, steel brackets, wires and installation hardware



### 771E Failsafe IR Sensor

- IP44
- Current draw 20mA maximum
- Status LED indicates the IR sensor's continuity
- For use with CB3 & all LiftMaster garage door openers
- 2-wire system



### 1701E Bowarm

- For doors with vertical tracks
- Heavy duty steel construction



### 1702E Quick Release Lock

for vault type garages

- For exterior manual operation
- 1.8m industrial strength connecting cable
- Non-corrosive stainless steel face plate and spur washer
- Extension sleeve for doors up to 50mm thick
- Positive connection between cable and trolley release
- Includes: lock, sleeve, cable, connectors and two keys



### 1703E The Chamberlain Arm™

- Especially designed for the unique requirements of British canopy doors
- Delivered pre-assembled with an integral safety guard
- Easy installation
- Can open a canopy door to the full horizontal position
- Includes: fully assembled door arm, straight connecting arm, hardware and mounting tem plate



### 9-13-1 Reinforcement Bracket

- Reinforce thin sheet steel doors
- Adjustable length — can fit any size door panel



### 16200LM Door-in-Door Switch

- For use with pedestrian doors within a garage door
- Prevents the operator from activating when the switch/pedestrian door is open
- Open/close switch, easy to connect to garage door opener
- Includes: switch, wires and hardware

# Door and Operator Accessories (continued)



## 100010 Keypad 1-Function,

### Surface Mount

- Profile half cylinder
- 75x75x60, ø60 x 51 deep
- IP54, 3 keys



## 100027 Keypad 1-Function

### Flush Mount

- Profile half cylinder
- 75x75x50
- IP54, 3 keys



## 100034 Keypad 2-Function,

### Surface Mount

- Profile half cylinder
- 75x75x60, ø60 x 51 deep
- IP54, 3 keys



## 100041 Keypad 2-Function,

### Flush Mount

- Profile half cylinder
- 75x75x50
- IP54, 3 keys



## 100119 Door Arm Extension

- 2.8m extension
- For use when an operator must be mounted behind an open door



## 23009E Transformer 230V/9/AC 23024E Transformer 230V/24V/AC

- CEE 7/16 Europlug
- Cable — 1m
- 2 wire termination



## FLA230 Flashing Light Kit

- When connected to a LiftMaster Garage Door Opener the light will flash when the door is in motion
- Provides an additional measure of safety to the installation
- Connects to garage door opener logic board and 230V
- Lamp voltage: 230V
- Includes: lamp assembly, light bulb and mounting hardware



## EQL01 Door Handle Quick Release

- For exterior manual operation
- Use garage door handle and lock
- Includes: cable, hardware, adapters and instructions



## MDL100LM Mechanical Door Latch

- Latch attaches as a door bracket and provides a mechanical lock when the operator closes the garage door
- Provides additional security to the installation
- Easy to connect to garage door and trolley
- Garage door latches at the bottom of the door
- Includes: latch assembly, brackets, cable, and mounting hardware



## SDA-1LM Wing Door Adapter

- For up to 2.5m outward opening wing doors
- Easy to connect to garage door and trolley
- Includes: 2 arms, brackets, connecting pins, and mounting hardware





# Internet

## The LiftMaster™ Dealer Extranet... A Password

### Protected Website Designed Exclusively For You!

Now you can access the latest product information, technical bulletins, promotional offerings, place orders and check shipping status ... all from your computer 24 hours a day. 7 days a week.

Use your login and password to log on to the Dealer Extranet at <http://b2bnet.liftmaster.com>. With your catalog in hand placing an order on the website is easy.

1) make a note of the model you wish to order that is in the catalog:

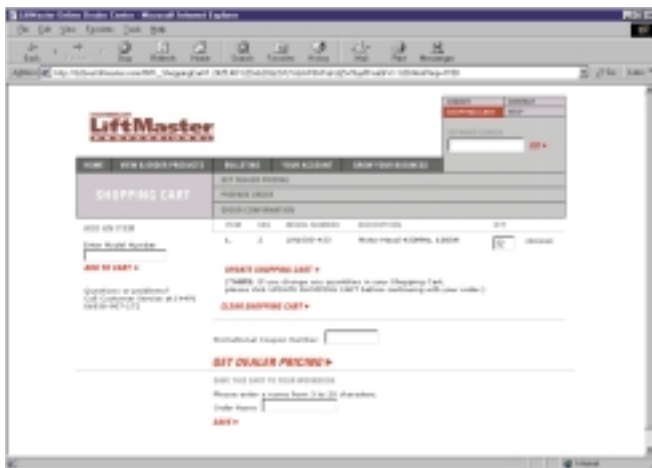


**12LM**

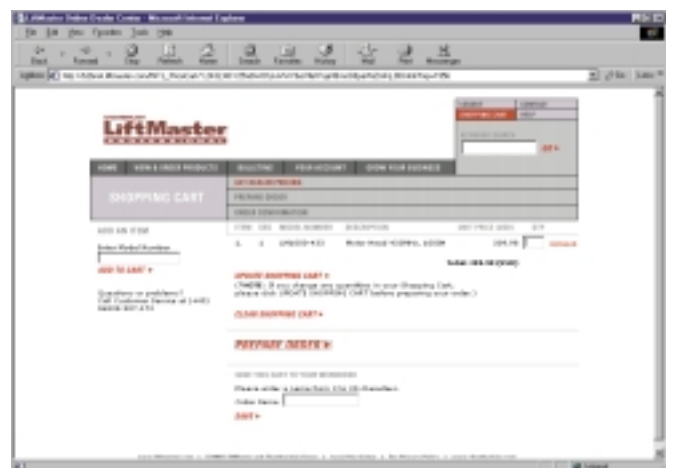
**LiftMaster 12-Volt Batteries**

- 10 batteries per pack

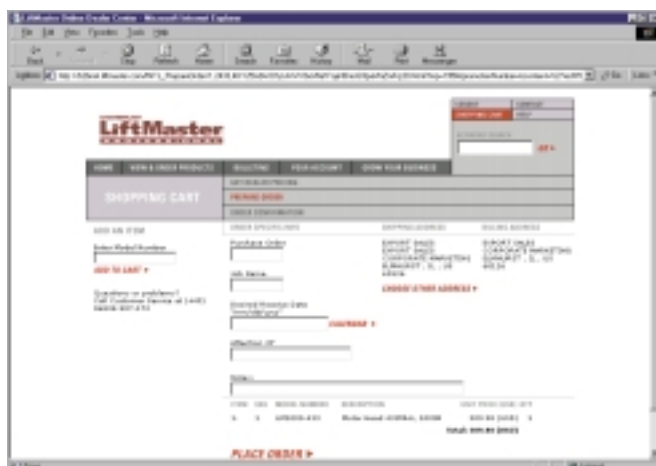
2) Log on to the internet and go to the shopping cart.



3) Enter the model number from above in the "Add to Cart" box. then click on add to cart. Add the products you need, and adjust the quantities and click on "update the shopping cart".



4) The third step is to Click on: GET DEALER PRICING.



5) Then Click on PREPARE THE ORDER. And fill in all of the areas in that are empty. Finally click on: Place Order and your are finished.

## Chamberlain Professional Products Customer Service

### Germany

Alfred-Nobel-Str. 4  
66793 Saarwellingen  
Germany  
Tel.: +49(0)6838/907-250  
Fax: +49(0)6838/907-179

### USA

845 Larch Ave.  
Elmhurst, Ill., 60025  
USA  
Tel.: +1 630-993-6025  
Fax: +1 630-530-6751

## Chamberlain Professional Products Branch Offices

### UK

Abbey Manor Business Centre  
Preston Road  
Yeovil Somerset BA20 2EN  
Tel. (+44) (0)1935 848526  
Fax. (+44) (0)1935 848527

### Scandinavia

St. Jorgensvei 77  
0662 Oslo  
Norway  
Tel.: (+47) (0)97 59 11 18  
Fax: (+47) (0)22 65 51 26

### Benelux

Postbus 10169  
1001ED Amsterdam  
The Netherlands  
Tel.: (+31) 020-673-3626  
Fax: (+31) 020-673-3610

### France

4, rue de Copenhague  
67300 Schiltigheim  
France  
Tel.: (+33) 03 87 98 15 93  
Fax: (+33) 03 87 95 48 16

### NE Europe

ul. Sportowa 10/17  
35111 Rzeszow  
Poland  
Tel.: (+48) 17 850 7950  
Fax: (+48) 17 853 0122

### Italy

Via Fermi 5  
24053 Brignano Gera d'Adda (BG)  
Tel. (+39) 0363.382100  
Fax. (+39) 0363.817023

### Asia

Chamberlain Pte Ltd.  
6-C Tanjong Rhu Road  
10-02 La Ville  
Singapore  
Tel.: (+65) 6342 0418  
Fax: (+65) 6346 2248

### SE Europe

Deviata 4/A  
83101 Bratislava  
Slovakia  
Tel.: (+421) 2 5479 3727  
Fax: (+421) 2 5465 2932

### China

Chamberlain Automation  
Systems (Shanghai) Co., Ltd.  
1st Floor, Building A, 500 Bing Ke Road  
Waigaoqiao Free Trade Zone,  
Pudong New Area,  
Shanghai, China 200131  
Tel: (+86) 21 5869 8833  
Fax: (+86) 21 5869 0432

Chamberlain is an ISO9001 certified manufacturer

the technology of the future

